

BeoMaster 5

BeoSound 5

Installation Guide for installation and setup of BeoMaster 5 and
BeoSound 5

English

Contents

Introduction	3
The BeoMaster 5 solution	4
Installation overview	6
Necessary setup elements	7
Setting up BeoMaster 5	9
Connecting BeoMaster 5	9
1. 'Audio Master' setup	9
2. 'Stand Alone' setup	10
3. 'Fully Integrated Audio Master' setup	11
Implementing BeoMaster 5 in BeoVision 9	12
Securing cables in BeoSound 5	18
Setting up remote control	19
Setting up 'Roles'	20
BeoSound 5	20
BeoMaster 5	21
Setting up screen resolution	22
High 1 (DVI-I/VGA/Y-Pb-Pr)	22
Standard (VIDEO/S-VIDEO)	23
Resolution table	24
Test Mode	24
Setting up 'Speaker type'	25
Testing the network connection	26
Access to 'Service Menu'	28
Network Settings	30
Network without a DHCP server	30
'Regional and language options'	31
When using wireless connection	32
Software update	34
Setting up 'Client Password'	35
Setting up the 'Client PC' (Windows XP)	37
Setting up the 'Client PC' (Windows Vista)	42
Setting up the 'Client MAC' (Macintosh)	49
Setting up time zone	53
Setting up date and time	54
Technical information	55
Useful information	58
BeoMaster/BeoSound 5 – Installation overview	59
BeoMaster 5 wall mount – standard wall bracket ...	60

Introduction

With BeoMaster 5 the customer can distribute digital media to different sources in a Master Link system. Daily operation is performed by Beo4 or Beo5, while the transfer of media files to BeoMaster 5 takes place via an extended 'Client software', i.e. BeoPlayer, BeoPort or BeoConnect – from a connected PC or MAC. The connection between BeoMaster 5 and the 'Client PC' or MAC is a standard Ethernet network with an Internet connection (ADSL or equivalent).

Installation and configuration of BeoMaster 5 must be performed by a trained installation/service partner, for whom this installation guide is intended. For detailed information about using BeoMaster 5 and BeoPlayer, please refer to the on-line user guides in the software.

This document contains links. Just click on a page reference to be transferred to that page.

Please note

This installation guide is designed for three different types of installation situations.

1. BeoMaster 5 is connected and configured in a 'Audio Master setup'
2. BeoMaster 5 is connected and configured in a 'Stand Alone setup'
3. BeoMaster 5 is connected and configured in a 'Fully Integrated Audio Master setup'

Besides the three main areas, a fourth installation scenario exists, which contains instructions on how to build a BeoMaster 5 into BeoVision 9.

4a. BeoVision 9 delivered from the factory without BeoMaster 5. When installing, use the complete installation guide.

Please read page 4-5, and follow instructions from page 7.

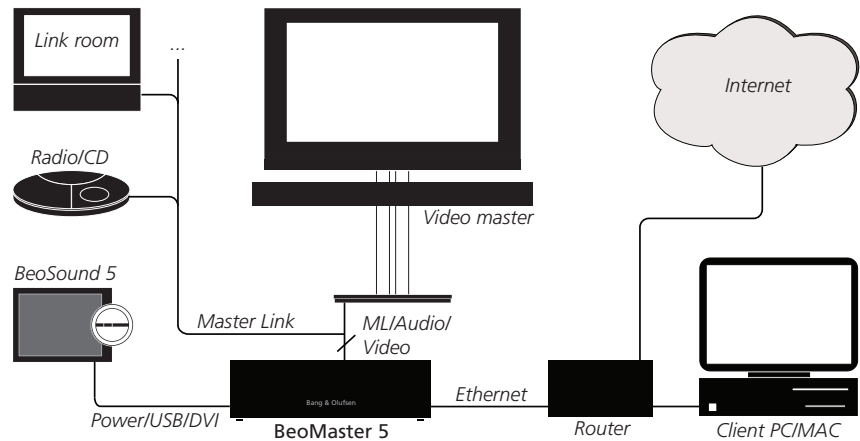
4b. BeoVision 9 delivered from the factory including BeoMaster 5. In this case BeoMaster 5 is delivered pre-configured and it is therefore only necessary to:

- Secure the cables in BeoSound 5 (only if BeoSound 5 is present, page 18).
- Set up language (only if BeoSound 5 is present, page 19).
- Set up roles (page 20-21).
- Test the network connection/network settings (from page 26), and the following part of the guide.

To get an overview of the installation, please refer to the Installation Flow Chart on page 8.

The BeoMaster 5 solution

Before the actual installation procedure, this guide describes the main components in a typical BeoMaster 5 system. To achieve full functionality in a Master Link system, BeoMaster 5 must be connected to a main room TV as shown in the diagram below.



BeoMaster 5

The central component in the system is the BeoMaster 5 unit, which has a hard disk as storage medium for media files and at the same time establishes the connection to the Internet to receive Net Radio stations and updates. BeoMaster 5 is also the 'Socket Unit' for BeoSound 5.

All the cables, except the enclosed cables between BeoMaster 5 and BeoSound 5, must be ordered separately.

BeoSound 5

BeoSound 5 is the control and display unit to BeoMaster 5, which makes local operation of N.Music and N.Radio on BeoMaster 5 possible. It contains a 10.4" TFT display, a control section (volume wheel, navigator arm and navigator wheel) and the primary 'IR Receiver'. Generally seen, it can be considered as the 'Master Unit' in BeoCenter 2, and the BeoMaster 5 as the 'Socket Unit'.

Video master

BeoMaster 5 can be connected to the following BeoVision products:
 BeoVision 3 MK III, BeoVision Avant 32 DVD MK III, BeoVision 5 MK III/IV,
 BeoSystem 1 MKII/III, BeoSystem 2 MKII/III, BeoSystem 3, BeoCenter 6-23/26,
 BeoVision 7-32 MKI/II/III, BeoVision 7-40 MKI/II/III, BeoVision 8-26/32/40,
 BeoVision 9-50 MKI/II/III.

'Client PC' and MAC

BeoMaster 5 is supplied with a CD-ROM containing a version of the BeoPlayer and BeoPort software that has, among other features, support for N.RADIO and PHOTO. The CD-ROM also contains a version of BeoConnect for the Client MAC.

Note:

The 'Client PC' software (BeoPlayer or BeoPort) is used on a PC with Windows XP or Windows Vista.

The Client MAC software (BeoConnect) is used on a MAC (power pc or an Intel based MAC) with OS 10.4 or newer.

Network and Access Point

Routers, hubs/switches and other network components are not a part of the BeoMaster 5 package. These must be bought and installed separately if they are not already present in the installation.

The connection from BeoMaster 5 to the network can be created either with cables or a wireless solution, as it is possible to fit a wireless USB network adapter in the unit.

For a wireless solution, Bang & Olufsen recommends the use of a 'Gigabyte AirCruiser N300' USB adapter, as this is supported by BeoMaster 5.

When a new network is established, Bang & Olufsen recommends the use of shielded CAT 6 cables.

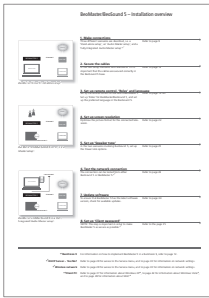
Initially BeoMaster 5 requires an Ethernet network connection from which it is possible to play N.Radio and browse web pages from the Internet, e.g.

www.bang-olufsen.com.

When delivered, the BeoMaster 5 unit is configured to use a dynamically assigned IP address that matches the typical network settings, in which case you will experience a complete plug & play solution.

If the network installation is not DHCP supported or when a wireless solution is preferred, it is necessary to set up properties for network connections manually.

Installation overview

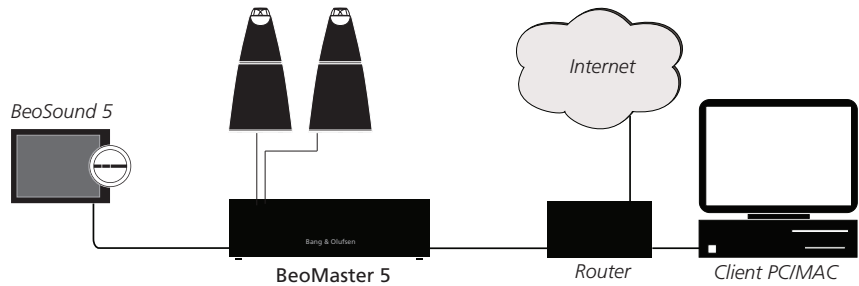


Click here for a quick installation overview

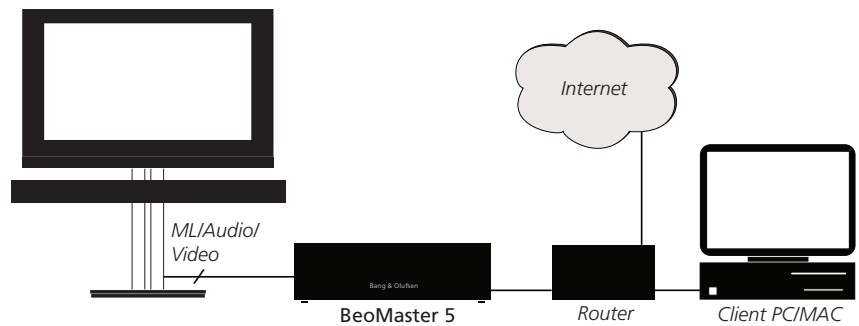
The following section describes the step-by-step installation of BeoMaster 5. In order to obtain a problem free (smooth) installation, follow the instructions carefully. Use the figures and instructions that relate to the BeoVision TV used in the setup in question.

This guide is divided into three main areas:

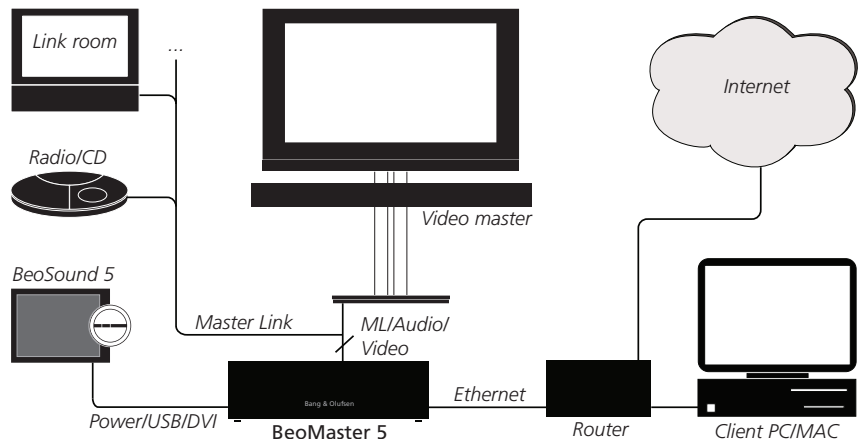
1. A description of how BeoMaster 5 is connected and configured in an **'Audio Master setup'**. That means a BeoSound 5 and BeoMaster 5 connected with a pair of speakers. In this setup the internal 'IR receiver' in BeoSound 5 is the primary remote receiver:



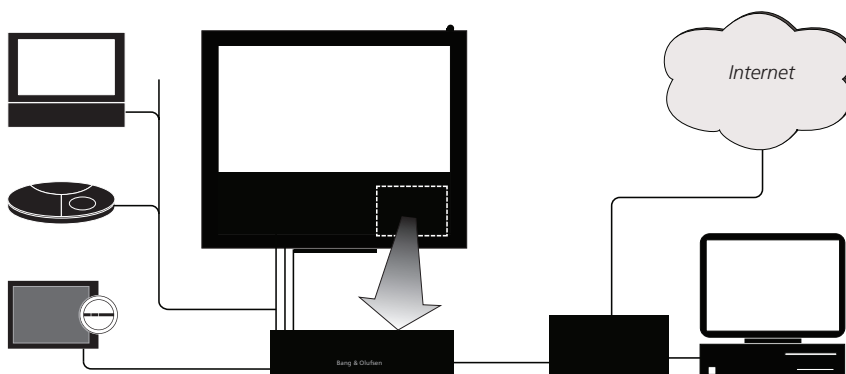
2. A description of how BeoMaster 5 is connected and configured in a **'Stand Alone setup'**. That means a BeoMaster 5 in a main room setup connected to a link system. In this setup, the operation and navigation of BeoMaster 5 is done by the 'Source Selection Menu' on the main room TV:



3. A description of how BeoMaster 5 is connected and configured in a **'Fully Integrated Audio Master setup'**. This means a BeoSound 5 and BeoMaster 5 connected to the main room TV, Master Link and possible another Audio Master:



- ! Besides the three main areas, a fourth installation scenario exists, which contains instructions on how to build a BeoMaster 5 into a BeoVision 9. This is done by ordering a BeoMaster 5 kit solution, which provides all necessary parts for a complete installation.



- ! Please refer to page 12 for instructions on how to build a BeoMaster 5 into a BeoVision 9.

Note

When setting up BeoMaster 5 in an installation where a wireless solution is preferred, a USB PC keyboard and mouse must be used. To configure the network you need information from the Internet Service Provider that describes the Internet connection in question.

BeoMaster 5 introduces a number of new technologies and connection to various external devices. But once a successful installation has been completed the BeoMaster 5 is a 'black box' that, like other Bang & Olufsen sources, offers fully integrated operation via the Beo4/Beo5 remote control and does not in general require any special maintenance.

Any software updates to BeoMaster 5/BeoSound 5 are made via the Internet connection, and this takes place automatically.

Software update can be made manually at any time. Please refer to page 34 for information about updating software manually.

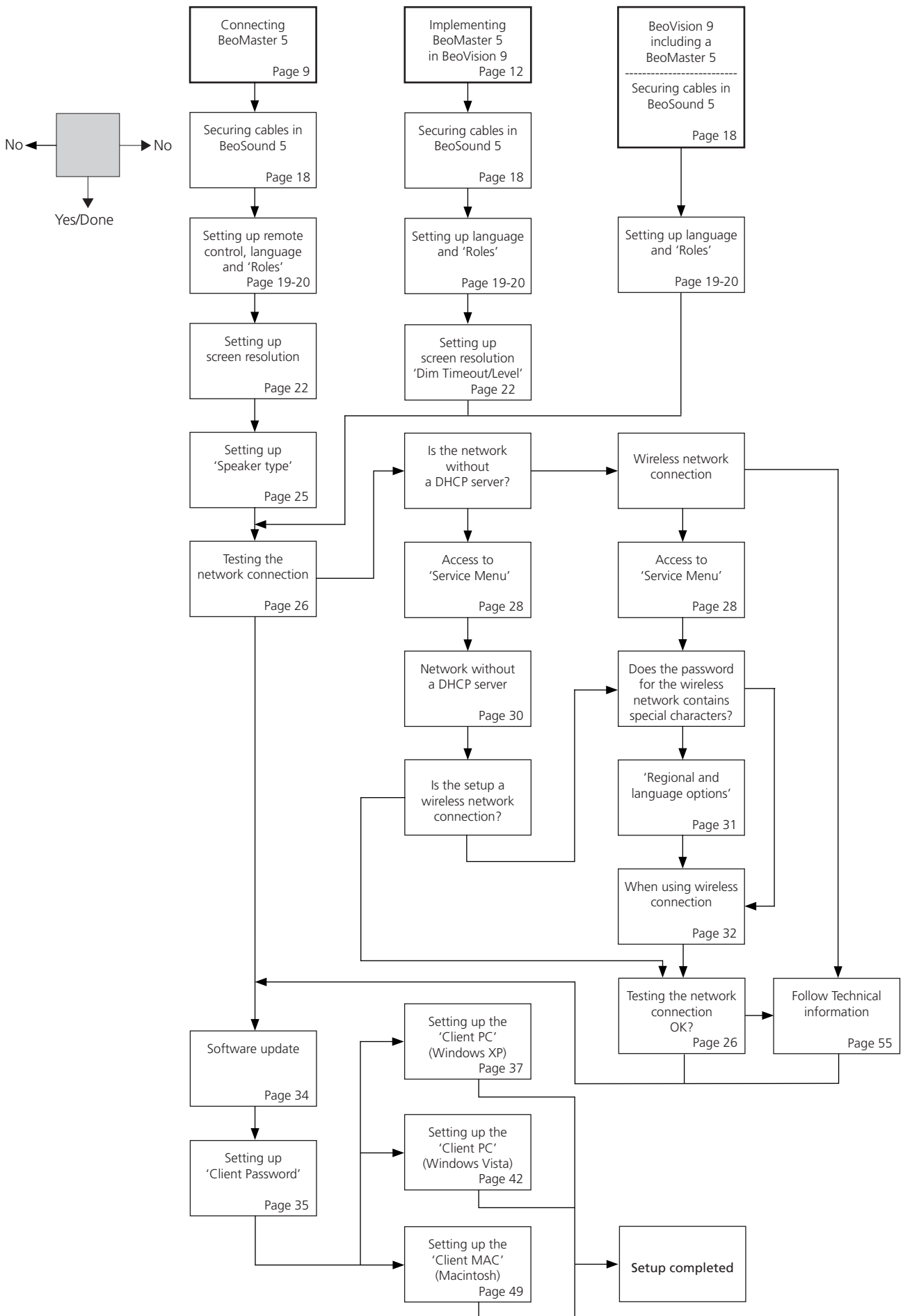
Necessary setup elements

To ensure a problem-free setup procedure and allow for as few errors as possible, please follow the procedure below in the described order:

- Connecting BeoMaster 5 or implementing BeoMaster 5 in a BeoVision 9.
- Securing cables in BeoSound 5.
- Set up the remote control.
- Set up date and time.
- Set up 'Roles'.
- Set up 'Screen resolution'.
- Set up 'Speaker type'.
- Set up a network (testing network connection).
- Update software.
- Set up the 'Client PC'/MAC.

The mentioned procedure follows in an Installation Flow Chart on the next page.

Installation Flow Chart

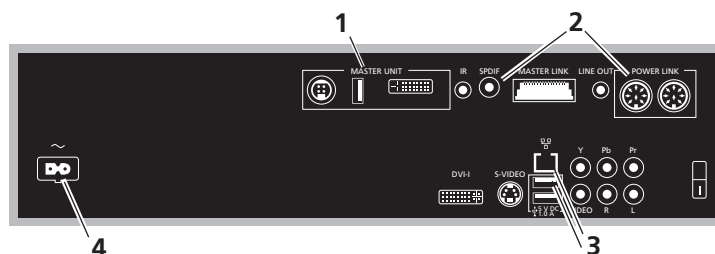


Setting up BeoMaster 5

Connecting BeoMaster 5

The following section describes the physical setup of the three setup scenarios and the implementation of BeoMaster 5 into a BeoVision 9:

1. 'Audio Master' setup



- Connect the three cables from BeoSound 5 to the MASTER UNIT section (1) on BeoMaster 5.
- Connect Power Link cables from speakers to the POWER LINK section (2) on BeoMaster 5. When BeoLab 5 is connected also connect SPDIF to the speakers. Remember to set switches for positioning of the speakers (left/right/free/wall/corner).
- Connect an ethernet cable from the network installation to the network connection socket (3) or connect the wireless USB network adapter ('Gigabyte AirCruiser N300' is recommended) to one of the free USB slots.
- Connect the mains cable to the mains input socket (4) and switch on the power.

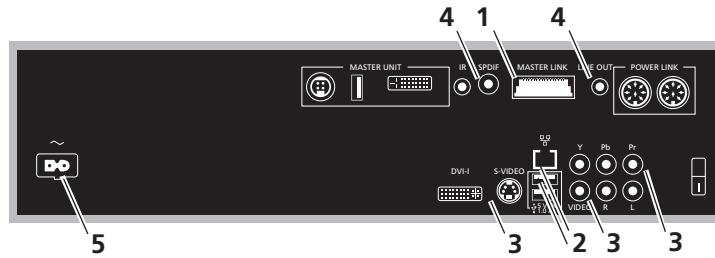
When BeoMaster 5 is connected to LAN (Local Area Network) in a DHCP-setup (Dynamic Host Configuration Protocol), is BeoMaster 5 by default set to obtain network settings such as IP address and gateway automatically from a DHCP server. If the network is not DHCP supported, additional settings to the network connection is required to be made (described later in the installation).

If a wireless internet connection is necessary, and the password for the wireless network contains special characters regarding to the language, a USB PC keyboard and mouse connected directly to the BeoMaster 5 unit must be used for the setup (described later in the installation).

When the last setup element (setting up PC/MAC – Windows XP on page 37, Windows Vista on page 42 or MAC on page 49) have been carried out, the installation process is completed, and the BeoMaster 5/BeoSound 5 is ready for use. It is important that the 'Client software' is registered, otherwise the full radio station list (N.RADIO) will not be presented.

When the startup procedure is running, the red stby. led on BeoSound 5 blinks to indicate the process. There is no need to do anything during the process, simply wait until the BeoSound 5 screen is black and the red stby. led is constant red (boot time is approx. 1 minute). The BeoMaster 5 is now in 'hibernation mode'. When BeoSound 5 is operated, the navigation menu appears, where you can navigate between the various sources shown on the screen.

2. 'Stand Alone' setup



- Connect the Master Link cable from the installation to the Master Link socket (1) on BeoMaster 5.
- Connect an ethernet cable from the network installation to the network connection socket (2) or connect the wireless USB network adapter ('Gigabyte AirCruiser N300' is recommended) to one of the free USB slots.
- Connect the video connection from the television to one of the four video output connections DVI-I, Y-Pb-Pr, S-VIDEO or VIDEO (3), in the mentioned priority order according to the video input type the television provides.
- Connect the audio connection from the television to one of the two out-put connections, SPDIF or LINE OUT (4), according to the sound input type the television provides.
- Connect the mains cable to the mains input socket (5) and switch on power.

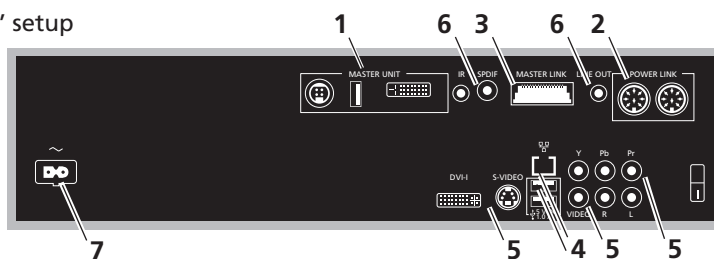
When BeoMaster 5 is connected to LAN (Local Area Network) in a DHCP-setup (Dynamic Host Configuration Protocol), is BeoMaster 5 by default set to obtain network settings such as IP address and gateway automatically from a DHCP server. If the network is not DHCP supported, additional settings to the network connection is required to be made (described later in the installation).

If a wireless internet connection is necessary, and the password for the wireless network contains special characters regarding to the language, a USB PC keyboard and mouse connected directly to the BeoMaster 5 unit must be used for the setup (described later in the installation).

When the last setup element (setting up PC/MAC – Windows XP on page 37, Windows Vista on page 42 or MAC on page 49) have been carried out, the installation process is completed, and the BeoMaster 5/BeoSound 5 is ready for use. It is important that the 'Client software' is registered, otherwise the full radio station list (N.RADIO) will not be presented.

The startup procedure can be followed on the TV screen (the TV must be on and the source PC must be chosen). There is no need to do anything during the process (boot time is approx. 1 minute), simply wait until the BeoMaster 5 main menu appears, where you can choose between the various sources shown on screen.

3. 'Fully Integrated Audio Master' setup



- Connect the three cables from BeoSound 5 to the MASTER UNIT section (1) on BeoMaster 5.
- Connect Power Link cables from speakers to the POWER LINK section (2) on BeoMaster 5 (only if the setup requires it). Remember to set switches for positioning of the speakers (left/right/free/wall/corner).
- Connect the Master Link cable from the installation to the Master Link socket (3).
- Connect an ethernet cable from the network installation to the network connection socket (4) or connect the wireless USB network adapter ('Gigabyte AirCruiser N300' is recommended) to one of the free USB slots.
- Connect the video connection from the television to one of the four video output connections DVI-I, Y-Pb-Pr, S-VIDEO or VIDEO (5), in the mentioned priority order according to the video input type the television provides.
- Connect the audio connection from the television to one of the two output connections, SPDIF or LINE OUT (6), according to the sound input type the television provides.
- Connect the mains cable to the mains input socket (7) and switch on power.

When BeoMaster 5 is connected to LAN (Local Area Network) in a DHCP-setup (Dynamic Host Configuration Protocol), is BeoMaster 5 by default set to obtain network settings such as IP address and gateway automatically from a DHCP server. If the network is not DHCP supported, additional settings to the network connection is required to be made (described later in the installation).

If a wireless internet connection is necessary, and the password for the wireless network contains special characters regarding to the language, a USB PC keyboard and mouse connected directly to the BeoMaster 5 unit, must be used for the setup (described later in the installation).

When the last setup element (setting up PC/MAC – Windows XP on page 37, Windows Vista on page 42 or MAC on page 49) have been carried out, the installation process is completed, and the BeoMaster 5/BeoSound 5 is ready for use. It is important that the 'Client software' is registered, otherwise the full radio station list (N.RADIO) will not be presented.

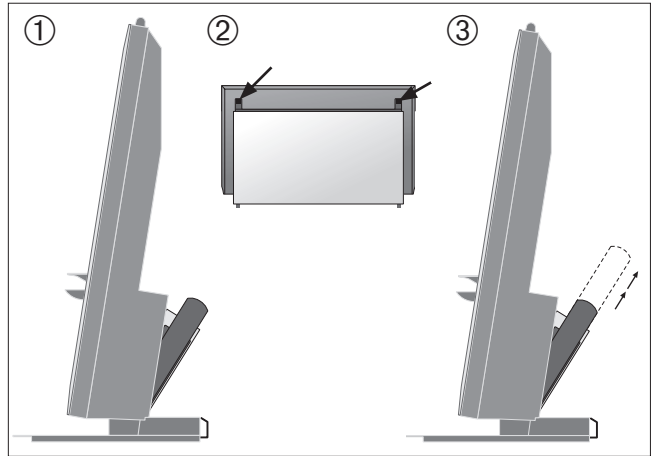
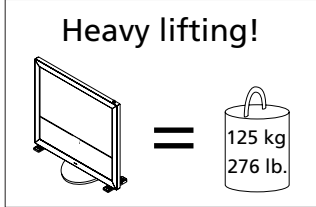
When the startup procedure is running, the red stby. led on BeoSound 5 blinks to indicate the process. There is no need to do anything during the process, simply wait until the BeoSound 5 screen is black and the red stby. led is constant red (boot time is approx. 1 minute). The BeoMaster 5 is now in 'hibernation mode'. When BeoSound 5 is operated, the navigation menu appears, where you can navigate between the various sources shown on the screen.

The startup procedure can also be followed on the TV screen (the TV must be on and the source PC must be chosen), simply wait until the BeoMaster 5 main menu appears, where you can choose between the various sources shown on screen.

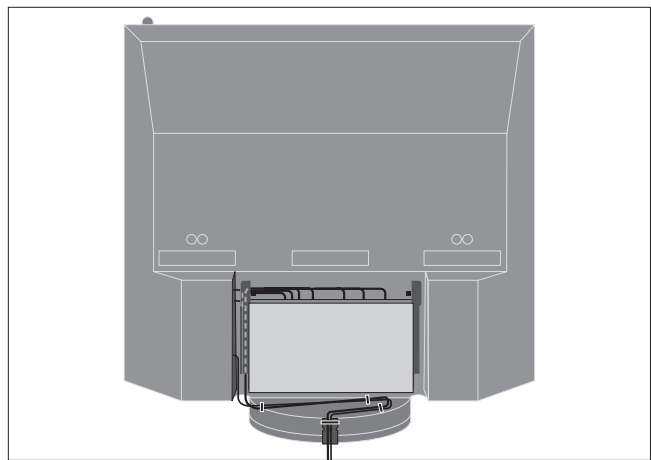
Implementing BeoMaster 5 in BeoVision 9

- Pull cover off BeoSystem 3

Caution

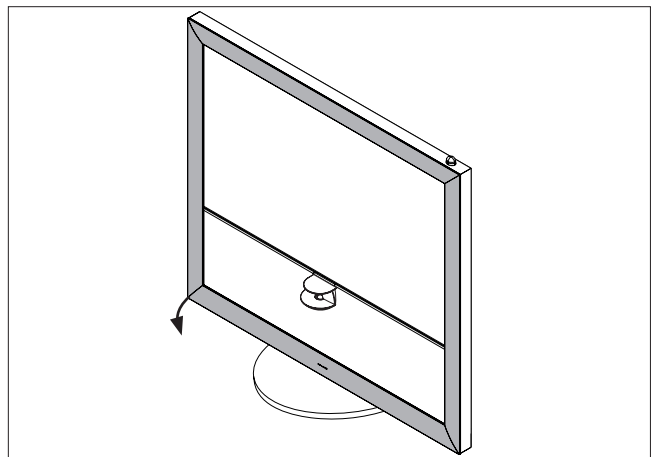
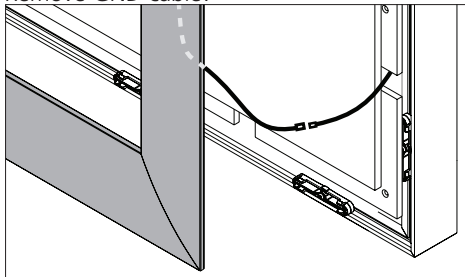


- Remove all cables for external use



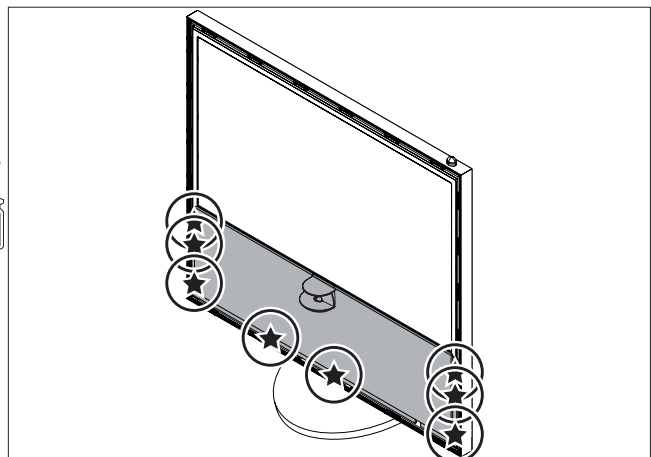
- Pull off front frame

Remove GND cable!

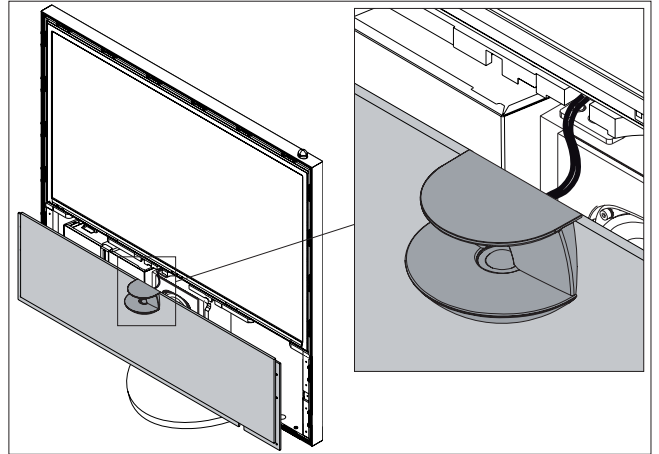


- Remove screws for fabric front

8x
TX10

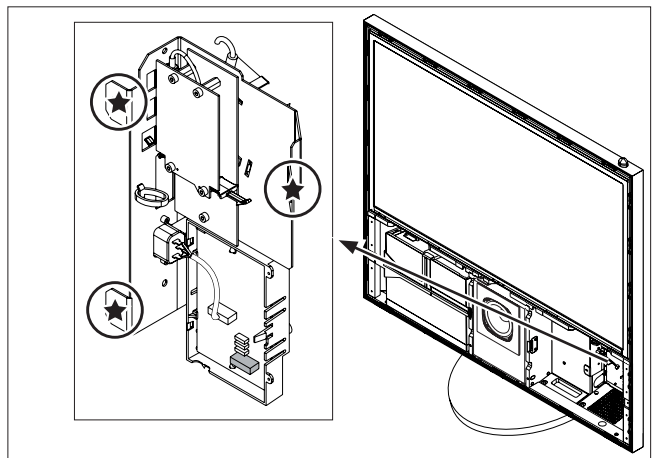


→ Pull off fabric front and remove cables for tweeter

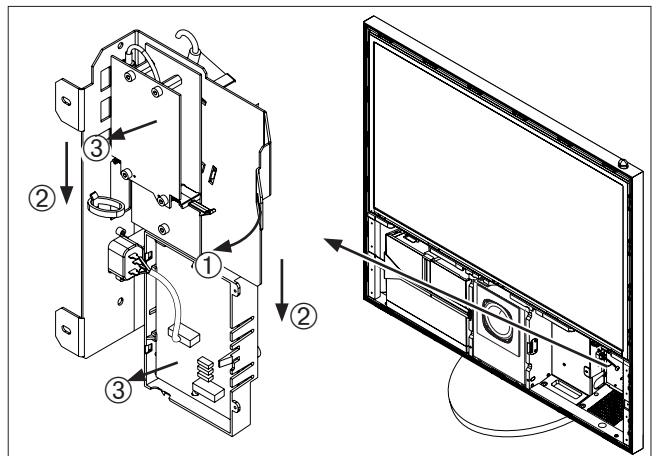
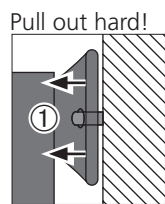


- Remove screws for Interface module

3x
TX20



- Pull out Interface module

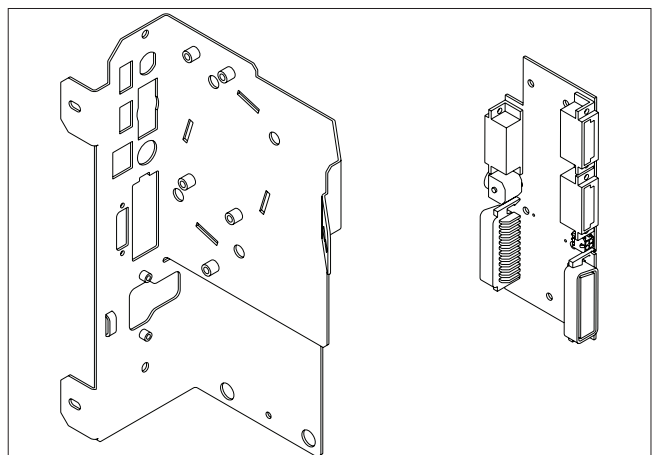


- Replacement of included bracket and PCB

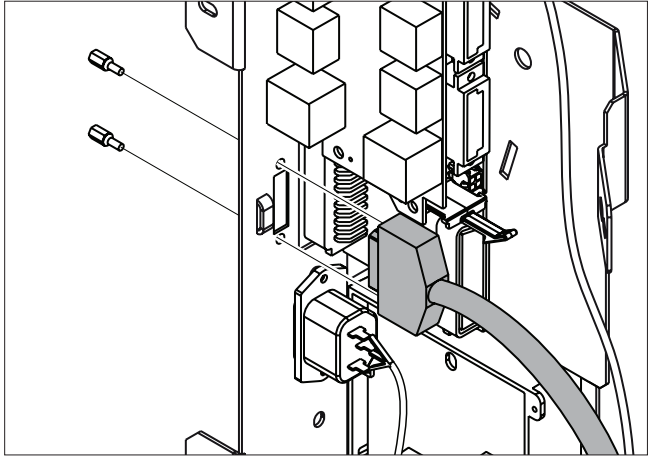
Before BeoVision 9-50 MKIV Type no. 9773 - 9784

- Replace both items

Otherwise items are preinstalled!

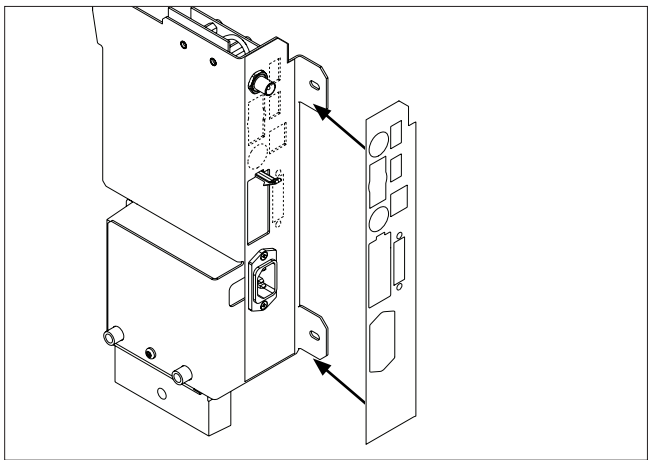
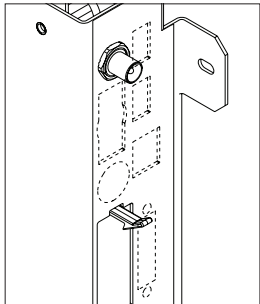


→ - Mount DVI cable - use enclosed bolts



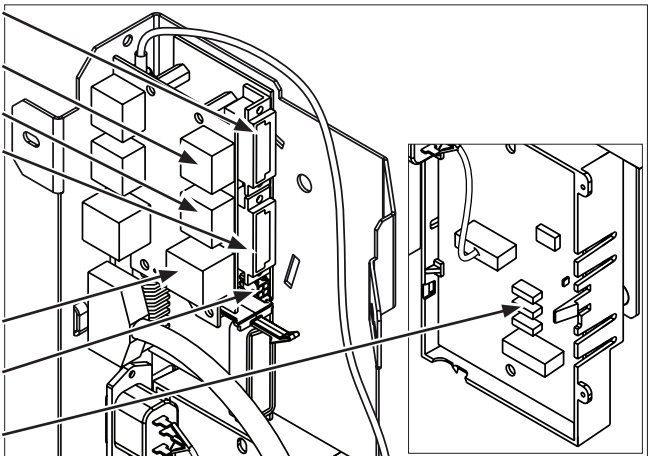
- Mount new label suited for your BeoVision 9
- Remove protective foil

Cut out holes in old label



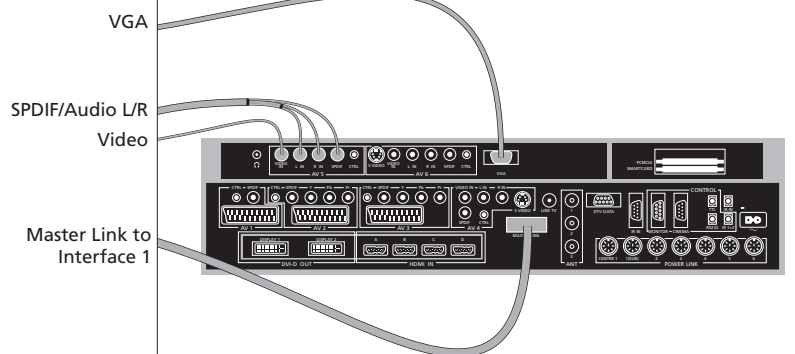
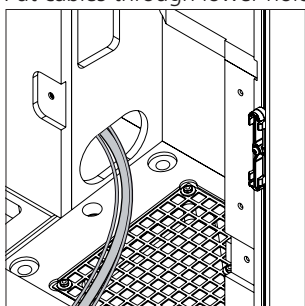
- Mount cables to Interface

- Master Link from BeoSystem 3
- USB
- USB
- Short Master Link to BeoMaster 5
- Short ethernet cable
- Master Unit power cable
- BeoMaster Power cable

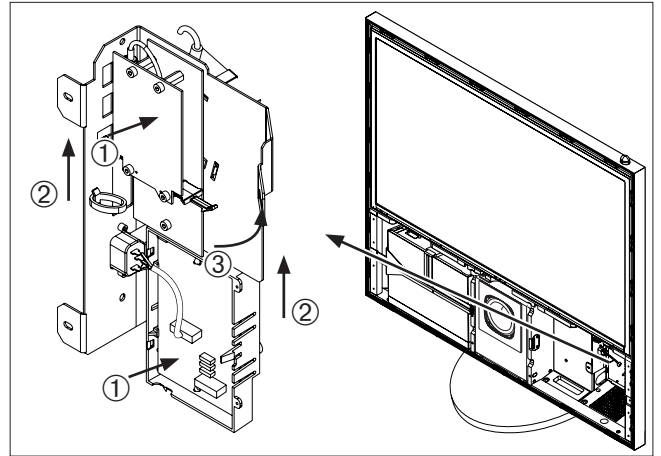


- Connect cables to Beosystem 3

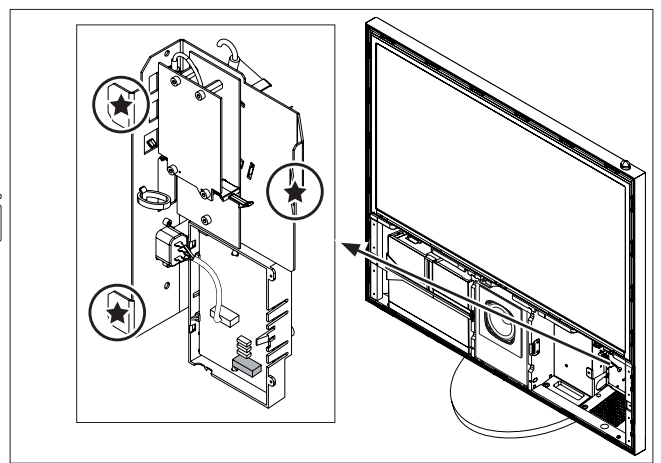
Put cables through lower hole



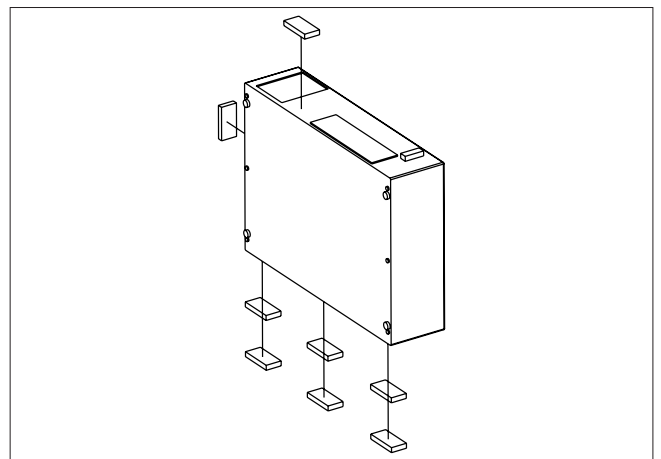
→ - Reinsert interface module



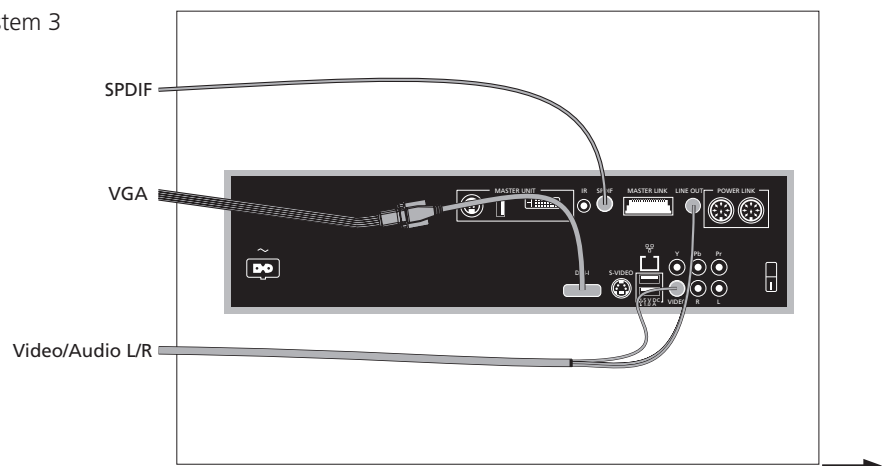
- Mount screws for Interface module



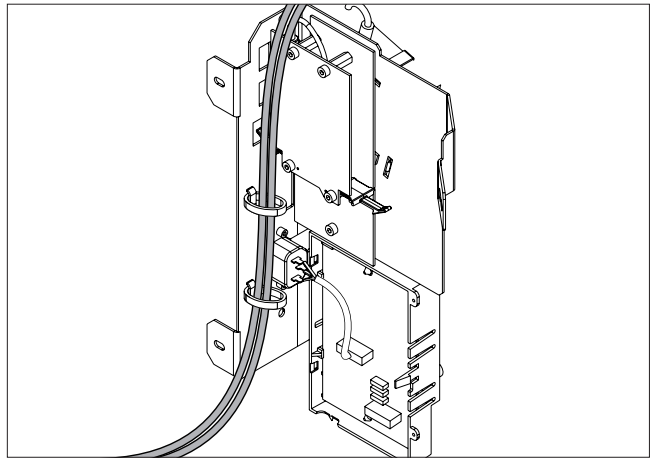
- Fit supplied foam on BeoMaster 5 as shown



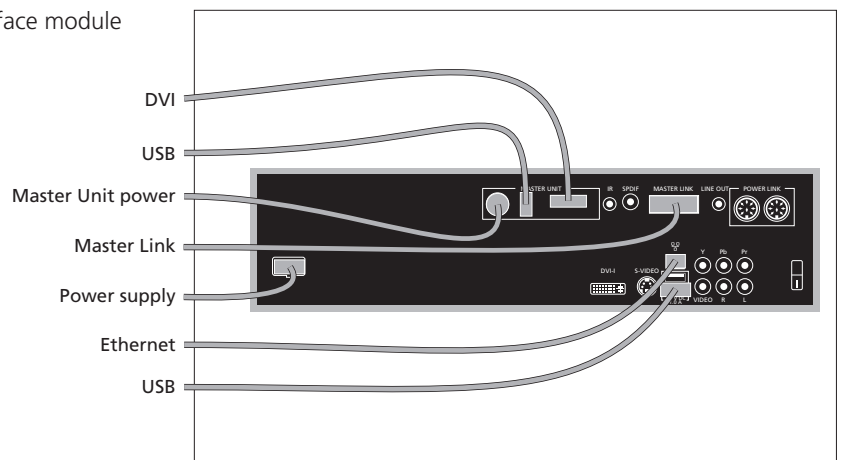
- Connect cables to BeoMaster 5 from BeoSystem 3



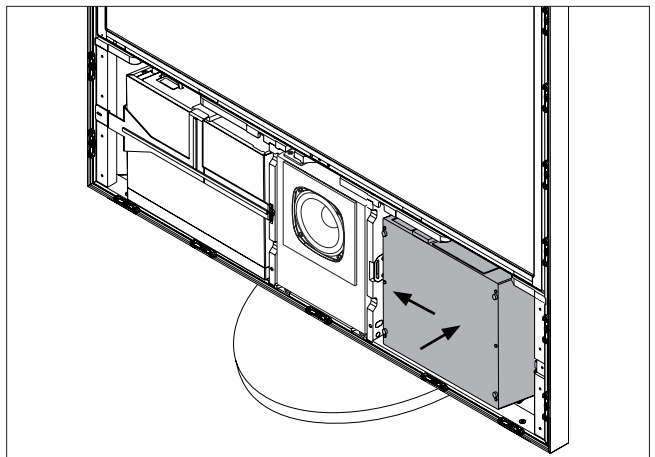
→ - Correct placement of VGA and Video cable



- Connect cables to BeoMaster 5 from Interface module

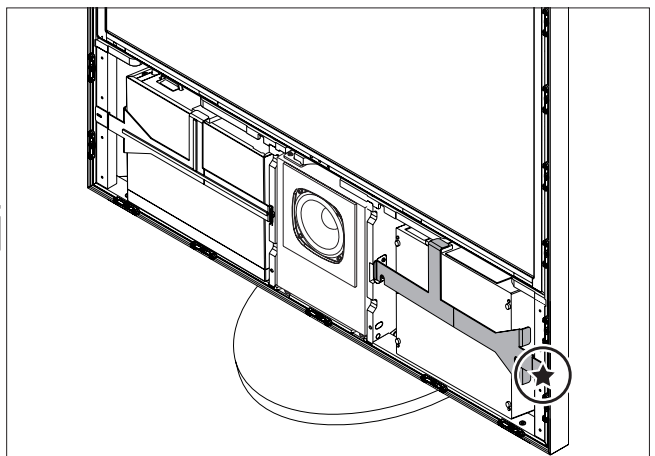


- Gently place BeoMaster 5 inside BeoVision 9

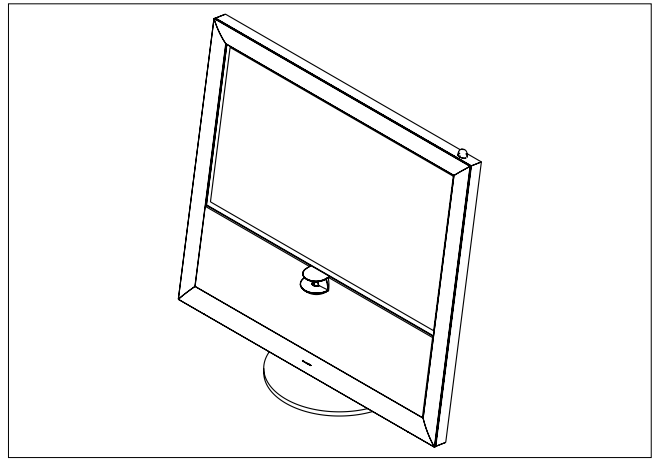


- Fasten bracket

1x
TX15

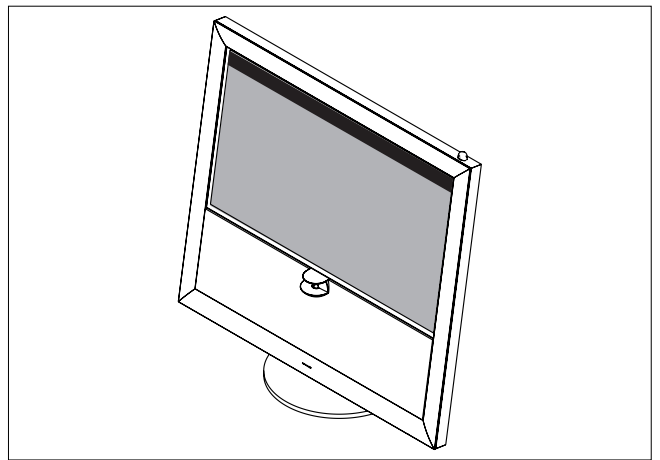


→ Reassemble BeoVision 9

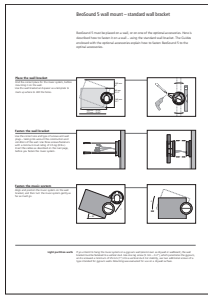


- Picture adjustments

When the implementation is finished, follow the setup of BeoMaster 5/BeoSound 5 from page 18.



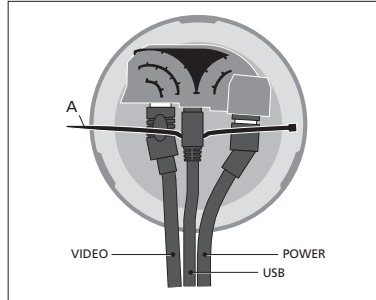
Securing cables in BeoSound 5



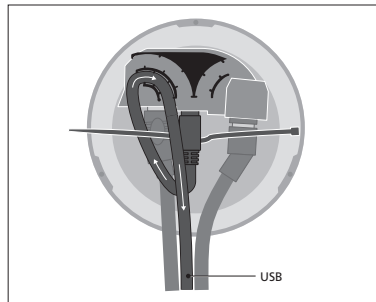
[Click here for wall mount installation guide](#)

When BeoSound 5 is present in the installation ('Audio Master setup' or 'Fully Integrated Audio Master setup'), it is important to secure the cables connected to BeoSound 5. Please follow the instruction below:

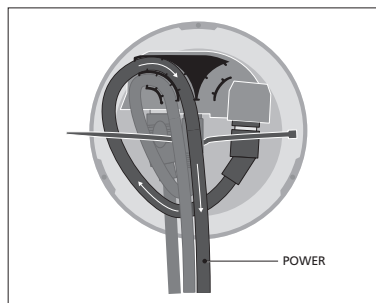
1. Insert the cables (VIDEO, USB and POWER) into the corresponding sockets in the base of the music system. Note: Place a cable binder behind the USB plug (A).



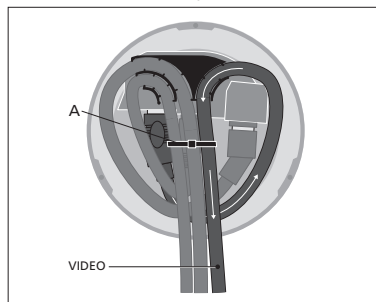
2. Run the USB cable through the cable holder.



3. Run the POWER cable under the USB cable and over the VIDEO cable, and then through the cable holder.



4. Run the VIDEO cable under the USB and POWER cables, and then through the cable holder. Finally, to secure the cables, tighten the cable binder (A).



Setting up remote control

To ease the setup of BeoMaster 5, Beo4 and Beo5 must be set up to operate BeoMaster 5.

Beo4

One of the following commands must be added to the list.

Add the **PC** command to the list. To do this, press **stby.** and **LIST** simultaneously on Beo4. When **ADD** is shown in the display, press **GO** and use **STEP UP/STEP DOWN** to navigate to **PC**. Press **GO** to add **PC** to the list.

For direct access to playback of N.RADIO and N.MUSIC, these should also be added to the list in Beo4. This is done by using the same procedure as described below.

For further information about this operation, please refer to the Beo4 User guide. The Beo4 User guide can be downloaded from [Bang & Olufsen Retail System](#) under the BeoWise section - Accessories - Remote Control - Beo4 (162x) - Guide and Reference Book.




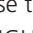

Beo5

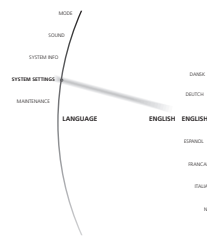
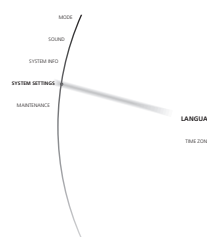
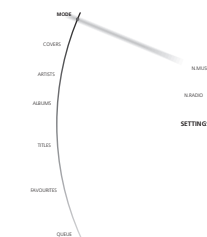
Use the Beo5 Configuration Tool (can be downloaded from [Bang & Olufsen Retail System](#) under the BeoWise section - Software & Tools - Beo5 Configuration Tool) to add buttons and to set up BeoMaster 5 functionality in Beo5.

Setting up language (BeoSound 5 only)

To ensure a correct setup of the preferred language on BeoSound 5, use the following setup procedure below:

BeoSound 5

- Move the navigator arm  to 'Mode' and use the wheel  to highlight **SETTINGS**. Press **GO**.
- Move the navigator arm  to **SYSTEM SETTINGS** and use the wheel  to highlight **LANGUAGE** and press **GO**.
- Use the wheel  to highlight the preferred languages and press **GO** to save the setting.





The different languages are:
 Danish, German, English, Spanish,
 French, Italian, Dutch and Swedish.

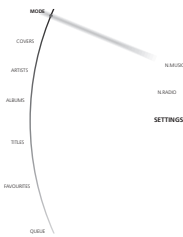
Setting up 'Roles'

To ensure correct operation of BeoMaster 5 when installed, it is necessary to define the 'role' that BeoMaster 5 is going to play, in the setup. The main question is whether the installation is a 'Audio Master' setup or not.

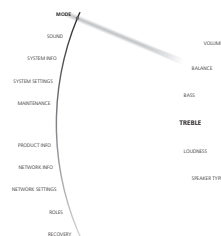
Set up of AM (Audio Master) Option is available in the 'Service Settings Menu' in both BeoSound 5 and BeoMaster 5. To access the setup use the following procedure:



BeoSound 5

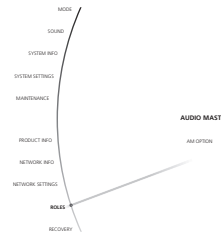
- Move the navigator arm  to 'Mode' and use the wheel  to highlight SETTINGS.



- On BeoSound 5 keyboard, press: **▶ ◀ ▶ ◀ GO** to activate 'Service Settings' (Service Settings appears in left side of the screen, containing new sub menus).



- Move the navigator arm  to ROLES and use the wheel  to highlight AUDIO MASTER or AM OPTION and press **◀**.



Only if 'Audio Master' is set to **Yes**, the parameter for AM OPTION will be enabled. When disabled (**NO**), the parameter is greyed out. Settings are stored by **GO**.

The options for AM OPTION are:

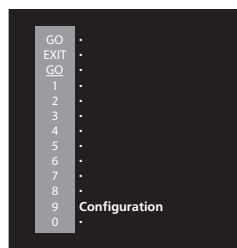
- 0 BeoSound 5 will not receive any IR. ('Stand-alone setup/Fully Integrated Audio setup', see page 6 for information).
- 1 BeoSound 5 will respond to IR but only for N.Music and N.Radio (for a 'Audio Master setup', see page 6).
- 2 BeoSound 5 will respond to IR. i.e. BeoSound 5 can also play audio from TV.

Settings are stored by **GO**.

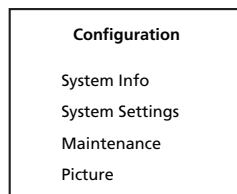
- ! The default value for 'AM Option' is 1.

BeoMaster 5

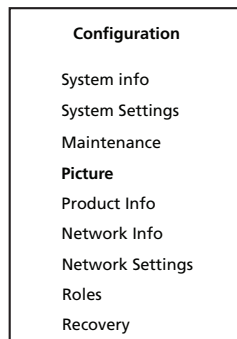
- Beo4:
Press **MENU 9** to enter the 'Configuration menu'.
- Beo5:
Press **Menu '+' 9** to enter the 'Configuration menu'.



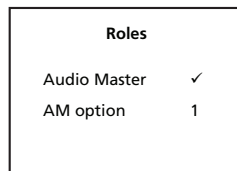
- Beo4:
Press **0 0 GO** to expand the 'Configuration menu'.
- Beo5:
Press **0 0 OK** to expand the 'Configuration menu'.



- Beo4:
Move highlight text to 'Roles' and press **GO**.
- Beo5:
Move highlight text to 'Roles' and press **OK**.



- Beo4:
Move highlight text to 'Audio Master' and press **◀ ▶**.
- Beo5:
Move highlight text to 'Audio Master' and press **◀ ▶**.



Only if 'Audio Master' is set to Yes (✓), the parameter for 'AM option' will be enabled. When disabled (x), the parameter is greyed out. Settings are stored by **GO** or **OK**.

The options for AM OPTION are:

- 0 BeoSound 5 will not receive any IR. ('Stand-alone setup/Fully Integrated Audio setup', see page 6 for info).
- 1 BeoSound 5 will respond to IR but only for N.Music and N.Radio (for an 'Audio Master setup', see page 6).
- 2 BeoSound 5 will respond to IR. i.e. BeoSound 5 can also play audio from TV.

Settings are stored by **GO** or **OK**.

! The default value for 'AM Option' is 1.

Setting up screen resolution

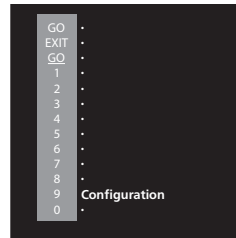
This setting optimises the picture format on the connected television. The connection type distinguish between DVI-I/YPbPr connection and VIDEO/S-VIDEO, but only one of the two connections can be chosen at a time. The setup is necessary when BeoMaster 5 is placed in the following setups:

- 'Stand Alone'
- 'Fully Integrated Audio Master setup'
- 'Implemented in BeoVision 9'

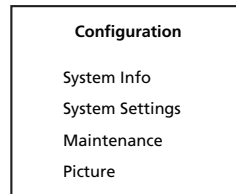
High 1 (DVI-I/VGA/Y-Pb-Pr)

To perform correct setup of screen resolution use the following procedure:

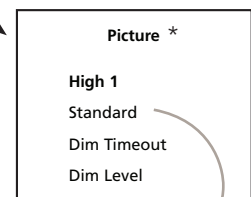
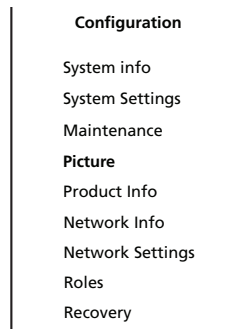
- **Beo4:**
Press **MENU 9** to enter the 'Configuration menu'.
- **Beo5:**
Press **Menu '+' 9** to enter the 'Configuration menu'.



- **Beo4:**
Press **0 0 GO** to expand the 'Configuration menu'.
- **Beo5:**
Press **0 0 OK** to expand the 'Configuration menu'.

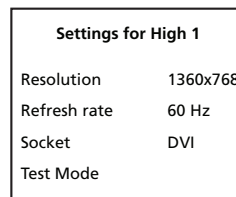


- **Beo4:**
Move highlight text to 'Picture' and press **GO**. Move highlight text to 'High 1' and press **GO**.
- **Beo5:**
Move highlight text to 'Picture' and press **OK**. Move highlight text to 'High 1' and press **OK**.



'Standard' is 'greyed out' in this case

- **Beo4:**
Move highlight text to 'Resolution'/'Refresh rate' and use **◀ ▶** to choose the correct values. Press **GO** to save settings.
- **Beo5:**
Move highlight text to 'Resolution'/'Refresh rate' and use **◀ ▶** to choose the correct values. Press **OK** to save settings.



'Socket' cannot be changed. It is only shown as a information. Socket type is: DVI-I, VGA or YPbPr

! The settings are store when **GO** or **OK** is pressed, but is first applied when **EXIT**, or **BACK** is pressed.

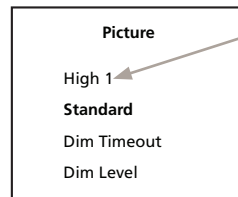
Please refer to page 24 (resolution table), to see the correct resolution according to the connected TV, and for how to use the 'Test Mode'.

* When BeoMaster 5 is connected to a BeoVision 9-50, set 'Dim Timeout' to 3 min. and 'Dim Level' to 200.

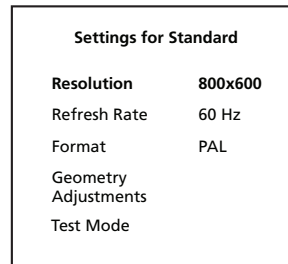
Standard (VIDEO/S-VIDEO)

To enter the 'Picture' sub-menu, please follow the first 2 steps in the procedure on the previous page, and then return to this page to continue:

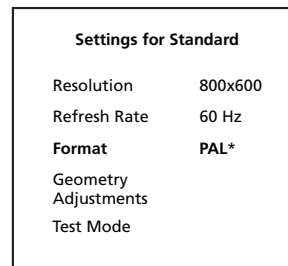
- Beo4:
Move highlight text to 'Standard' and press GO
- Beo5:
Move highlight text to 'Standard' and press OK



- 'Resolution' and 'Refresh Rate' cannot be changed. They are only shown as a information.

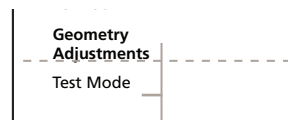


- Beo 4:
Move highlight text to 'Format' and use ◀ ▶ to choose the value according to the system.
Press GO to save settings.

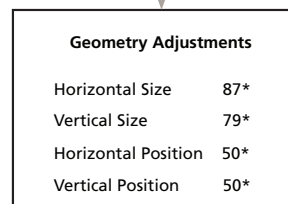


- Beo5:
Move highlight text to 'Format' and use ◀ ▶ to choose value according to the system. Press OK to save settings.

- Beo4:
Move highlight text to 'Geometry Adjustments' and press GO. New screen appears.



- Beo5:
Move highlight text to 'Geometry Adjustments' and press OK. New screen appears.



Use highlight text and use ◀ ▶ to choose between values.
Press EXIT or BACK to store values.

- ! The settings are store when GO or OK is pressed, but is first applied when EXIT, STOP or BACK is pressed.

Please refer to page 24 for how to use the 'Test Mode'.

Resolution table

Product	Resolution (VGA) 60 Hz	Resolution (DVI) 60 Hz (BM5)	Resolution (YpbPr) 60Hz (BM5)	Resolution (CVBS or Y/C)
BeoSystem 1 MKII (940x)	-	-	-	800 x 600
BeoSystem 1 MKIII (9431-9436)	-	-	-	800 x 600
BeoSystem 2 MKII (941x)	-	-	-	800 x 600
BeoSystem 2 MKIII (942x)	-	-	-	800 x 600
BeoSystem 3 + BV4 MKI HD	1360 x 768	1360x768	720p / 1080i	800 x 600
BeoSystem 3 + BV4 MKII FHD	1360 x 768	1920x1080p	720p / 1080i	800 x 600
BeoSystem 3 + BV4 MKIII FHD	1360 x 768	1920x1080p	720p / 1080i	800 x 600
BeoVision Avant 32 DVD MK III (846x)	-	-	-	800 x 600
BeoVision 3 – 32 MK III (881x)	-	-	-	800 x 600
BeoVision 5 MK III (891x/8931)	-	-	-	800 x 600
BeoVision 5 MK IV (8939/894x)	1024 x 768	1024 x 768	1024 x 768	800 x 600
BeoCenter 6 – 23 (9212-9218) HD-Ready	1360 x 768	1360 x 768	-	800 x 600
BeoCenter 6 – 26 (9280-9286)	1360 x 768	1360 x 768	720p / 1080i	800 x 600
BeoVision 7 – 32 MKI (9310-9320)	1366 x 768	1360 x 768	-	800 x 600
BeoVision 7 – 32 MKI (9310-9320) HD-kit	1360 x 768	1360 x 768	720p / 1080i	800 x 600
BeoVision 7 – 32 MKII (9321-9329)	1366 x 768	1360 x 768	-	800 x 600
BeoVision 7 – 32 MKII (9321-9329) HD-kit	1360 x 768	1360 x 768	720p / 1080i	800 x 600
BeoVision 7 – 32 MKIII (9331-9339)	1360 x 768	1360 x 768	-	800 x 600
BeoVision 7 – 40 MKI (9351-9359)	1366 x 768	1360 x 768	-	800 x 600
BeoVision 7 – 40 MKI (9351-9359) HD-kit	1360 x 768	1360 x 768	720p / 1080i	800 x 600
BeoVision 7 – 40 MKII (9361-9369)	1360 x 768	1360 x 768	720p / 1080i	800 x 600
BeoVision 7 – 40 MKIII (9370-9384)	1360 x 768	1920x1080p	720p / 1080i	800 x 600
BeoVision 8 – 26 (9500)	1360 x 768	1360 x 768	Not possible !	800 x 600
BeoVision 8 – 32(9550-9551)	1360 x 768	1360 x 768	Not possible !	800 x 600
BeoVision 8 – 40 (9560-9561)	1360 x 768	1920x1080p	Not possible !	800 x 600
BeoVision 9-50 MKI HD (9710-9719)	1360x768	1360x768	720p / 1080i	800 x 600
BeoVision 9-50 MKII FHD (9710-9719)	1360x768	1920x1080p	720p / 1080i	800 x 600
BeoVision 9-50 MKIII FHD (9760-9772)	1360x768	1920x1080p	720p / 1080i	800 x 600

! This table is not final. More products may be added as televisions are updated.

Test Mode

To ensure the correct settings for 'High 1' and 'Standard', use the 'Test Mode' function.

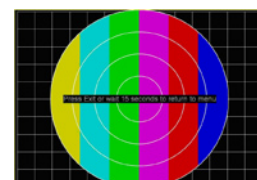
- Open settings for 'High 1' or 'Standard' highlight 'Test Mode', and press **GO/OK**

Settings for High 1	
Resolution	1360x768
Refresh rate	60 Hz
Socket	DVI
Test Mode	

The test picture appears on the screen


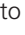

- The test picture automatically disappears after 15 sec., and the menu screen returns.

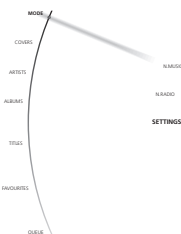
- ! The 'Test Mode' can be interrupted by pressing **EXIT** or **BACK** on Beo4/Beo5.


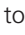



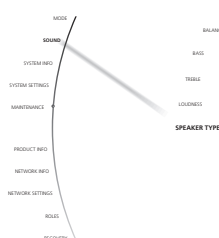
Setting up 'Speaker type'


To ensure correct operation, it is necessary to setup the Power Link options for BeoSound 5. The setup is only necessary in a 'Audio Master setup' or a 'Fully Integrated Audio Master setup', and can therefore only be done from BeoSound 5. The setup is made in the following way:

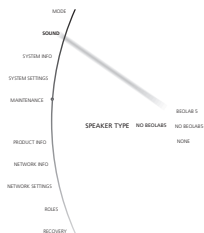
- Move the navigator arm  to 'Mode' and use the wheel  to highlight SETTINGS and press .



- Move the navigator arm  to SOUND and use the wheel  to highlight SPEAKER TYPE and press .



- Use the wheel  to highlight one of the two available options and press **GO** to save the setting.



The options for SPEAKER TYPE are:

- BEOLAB 5 (only when BeoMaster 5 is connected directly to BeoLab 5).
- NO BEOLAB 5 (when BeoMaster 5 is connected to any other B&O speakers).

When **GO** has been pressed, the setting is stored and approx. 3 sec. later, the sub-menu is automatically left.



Testing the network connection

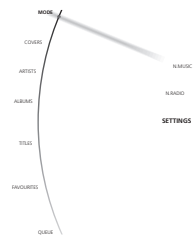
If a wired connection is used as recommended by Bang & Olufsen, connect the network cable from the router to BeoMaster 5. To check the network's physical connection, check that the green LED is on the network card is on.





If the customer wants a wireless network connection, BeoMaster 5 supports drivers for a wireless 'Gigabyte' USB adapter. This has to be inserted in one of the free USB slots on the BeoMaster 5.

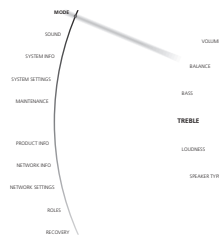
The network connection can be tested from both BeoSound 5 and BeoMaster 5 by the following procedure:


BeoSound 5

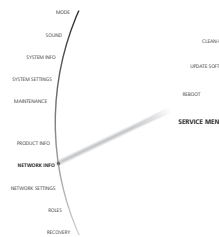
- Move the navigator arm  to 'Mode' and use the wheel  to highlight SETTINGS.



- On BeoSound 5 keyboard, press:     **GO** to activate 'Service Settings' (Service Settings appears in left side of the screen, containing new sub menus).



- Move the navigator arm  to NETWORK INFO, and press **GO**.



- Now the following information appears.

If INTERNET CONNECTION says **YES**, the connection to the internet is OK.



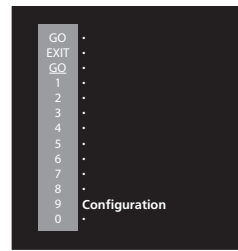
**IP address/MAC address are only shown examples*

If a wired connection is used and INTERNET CONNECTION says **YES**, the settings are correct. The next step is to check for software updates to ensure optimum performance. Please continue on page 34 for update procedure.

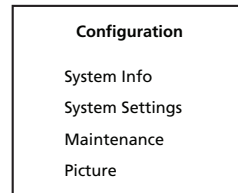
- ! If INTERNET CONNECTION says **NO**, please continue with the 'Network without a DHCP server' procedure described on page 30.

BeoMaster 5

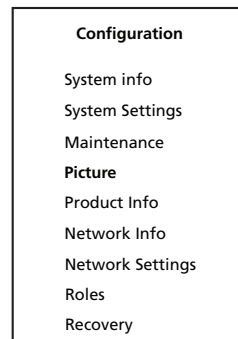
- Beo4:
Press **MENU 9** to enter the 'Configuration menu'.
- Beo5:
Press **Menu '+' 9** to enter the 'Configuration menu'.



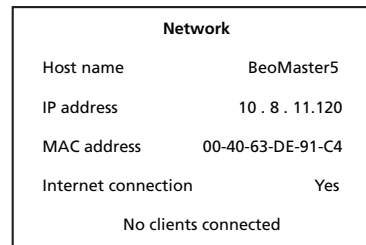
- Beo4:
Press **0 0 GO** to expand the 'Configuration menu'.
- Beo5:
Press **0 0 OK** to expand the 'Configuration menu'.



- Beo4:
Move highlight text to 'Network Info' and press **GO**.
- Beo5:
Move highlight text to 'Network Info' and press **OK**.



- Now the following information appears.



- If INTERNET CONNECTION says **YES**, the connection to the internet is OK.

**IP address/MAC address are only shown examples.*



If a wired connection is used and INTERNET CONNECTION says **YES**, the settings are correct. The next step is to check for software updates to ensure optimum performance. Please continue on page 34 for update procedure.

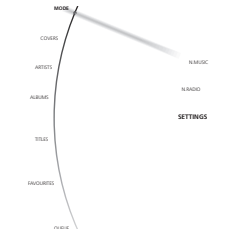
- ! If INTERNET CONNECTION says **NO**, please continue with the 'Network without a DHCP server' procedure described on page 30.

Access to 'Service Menu'

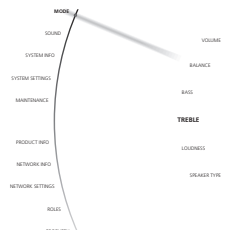
Access to the 'Service Menu' can be obtained in 2 ways, either from BeoSound 5* screen or from BeoMaster 5** (TV screen). Please use the following procedure for a smooth setup:



* **BeoSound 5**, 'Service Menu' access (when no TV is connected):

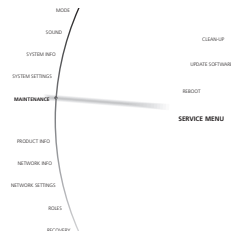
- Move the navigator arm  to 'Mode' and use the wheel  to highlight SETTINGS.



- On BeoSound 5 keyboard, press: **▶ ◀ ▶ ◀ GO** to activate 'Service Settings' (Service Settings appears in left side of the screen, containing new sub menus).



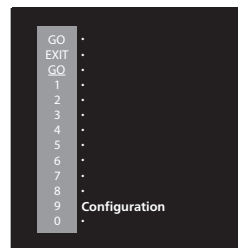
- Move the navigator arm  to MAINTENANCE and use the wheel  to highlight SERVICE MENU and press **GO**.



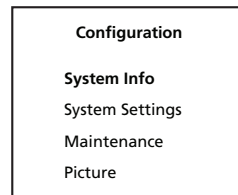
Now all active sources related to BeoSound 5 or BeoMaster 5 shuts down, and the 'Service Menu' appears on the screen (see page 29).

** **BeoMaster 5**, 'Service Menu' access (when TV is connected):

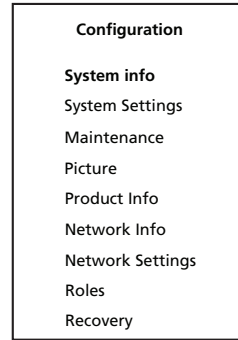
- Beo4:
Press **MENU 9** to enter the 'Configuration menu'.
- Beo5:
Press **Menu '+' 9** to enter the 'Configuration menu'.



- Beo4:
Press **0 0 GO** to expand the 'Configuration menu'.
- Beo5:
Press **0 0 OK** to expand the 'Configuration menu'.

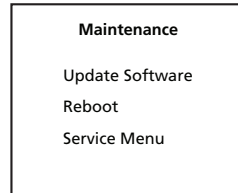


- Beo4:
Move highlight text to 'Maintenance' and press **GO**.



- Beo5:
Move highlight text to 'Maintenance' and press **OK**.

- Beo4:
Move highlight text to 'Service Menu' and press **GO**.



- Beo5:
Move highlight text to 'Service Menu' and press **OK**.

Now all running sources and processes related to BeoSound 5 or BeoMaster 5 shut down, and the Windows Desktop appears on the screen.

- SERVICE MENU



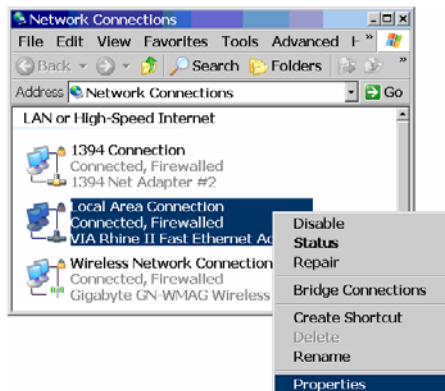
Network Settings

BeoMaster 5 is by default set to obtain network settings such as IP address and gateway automatically from a DHCP server.

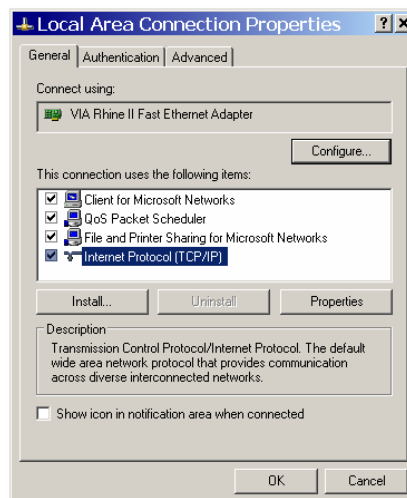
Different network setups, such as network via wireless or networks without a DHCP server, requires additional settings to be made on BeoMaster 5.

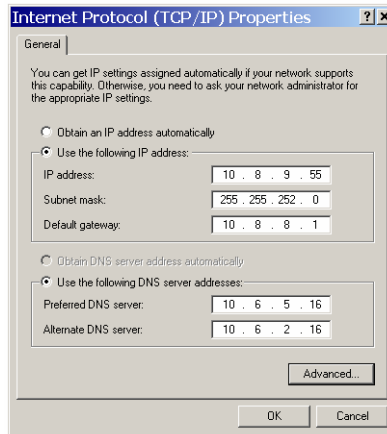
Network without a DHCP server

- Enter SERVICE MENU (see page 28).
- Double-click the 'Network Connections' icon on the SERVICE MENU. This will bring up the overview of different network connections.
- ! There are 2 possible connection types:
 1. 'Local Area Connection' (LAN) – used if BeoMaster 5 is connected to a wired network.
 2. 'Wireless Network Connection' (WLAN) – used if BeoMaster 5 is connected via Wireless network (wireless USB adapter).
- Click on the appropriate network connection.
- Right click on the network connection and select 'Properties' as shown below.



- Choose 'Internet Protocol (TCP/IP) in the 'item box' and click 'Properties'.





Note:
The shown addresses are only examples.

If it is necessary to set up 'WINS' and/or further 'DNS settings', click the Advanced button (not described in this guide).

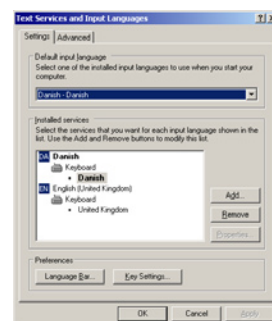
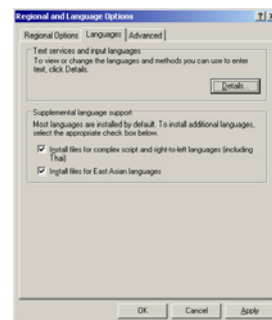
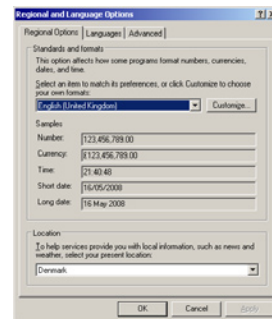
When the settings are made, test the network connection (described on page 26).

- ! If the password for the wireless network contains special characters regarding to the language, follow the 'regional and language option' setup below. If not, and a 'Wireless Network Connection' is used, continue on page 32.
- If the network connection is ok, follow the software update procedure (page 34).

'Regional and language options'

If the password for the wireless network contains special characters regarding to the language, setup the keyboard to fit the appropriate country.

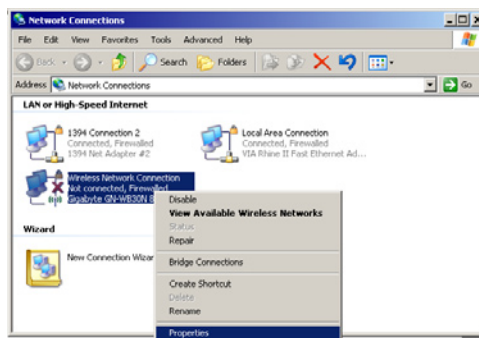
- Double click the shortcut 'Regional and language options' on the Service Menu.
- Start by setting up your Regional settings (English is only shown as an example).
- Click at the 'Language' tab, and then the 'Details' button.
- Choose your language as 'Default input language'. Click 'Apply'.
- When this is done, go to page 32, to continue the setup of wireless network connection.



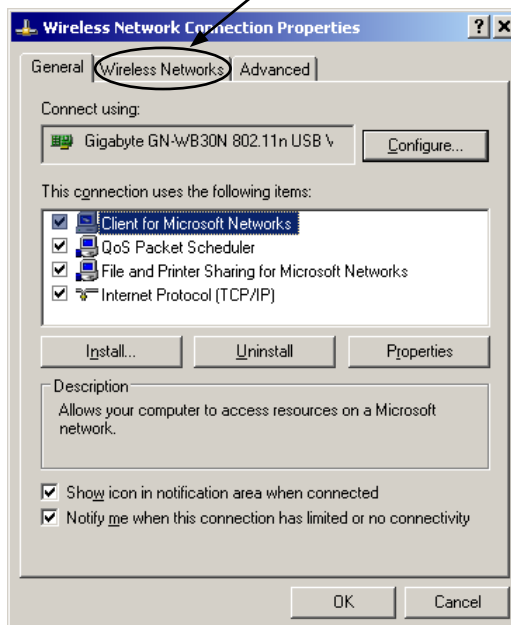
When using wireless connection

In a wireless setup, the customer's home network must be selected.

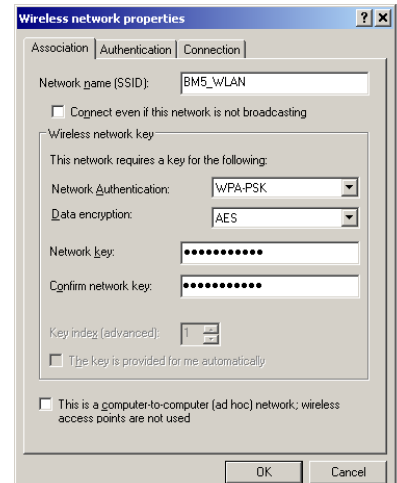
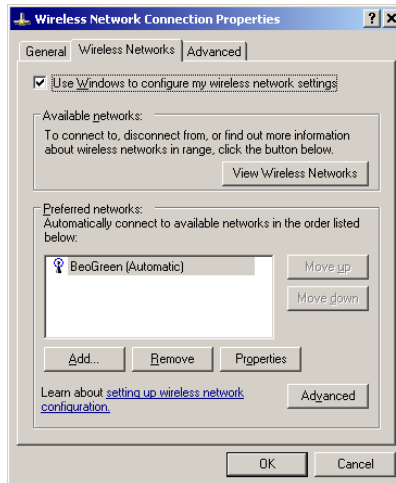
- Enter SERVICE MENU (see page 28).
- If the password for the wireless network contains special characters regarding to the language, setup the keyboard to fit the appropriate country (described on page 32). If not, continue below.
- Double-click the 'Network Connections' icon on the SERVICE MENU. This will bring up the overview of different network connections.
- Click on the appropriate network connection.
- Right click on the network connection and select 'Properties' as shown below.



- Click on the tab 'Wireless Networks' to adjust necessary settings, such as adding preferred networks and change properties (SSID and encryption key) on the desired network.



- The settings for wireless network opens (continues on the next page).



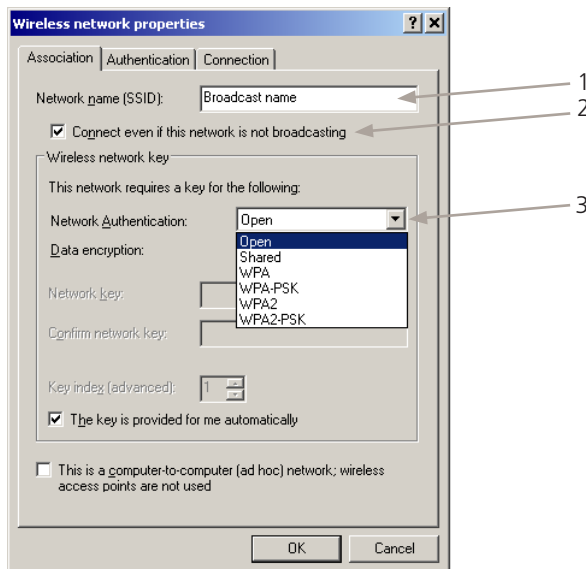
- Choose on the preferred networks and click the 'Properties' button.
- Choose Network Authentication, Data encryption and Network key and click OK.*

! BeoMaster 5 supports the following encryption formats (Network Authentication): Open, Shared, WPA, WPA-PSK, WPA2, WPA2-PSK. If data encryption is WEP, the Key index must be set to 1.

! Changes made for 'Wireless Network Connection Properties' are not available after 'Recovery' and must be reestablished manually.

! Network Key. It is very important to get this key from the customer.

* If the access point is set up to hide the SSID (Service Set Identifier), the network name is not shown. In this case, click the 'Add' button. The following appears:



1. Type in the Broadcast name.
2. Select the 'Connect even if the network is not broadcasting' field.
3. Choose the 'Network Authentication' type and the 'Data encryption' standard according to earlier described*.

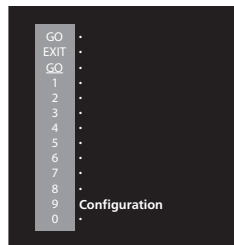
- When the settings are made, test the network connection (described on page 26).

Software update

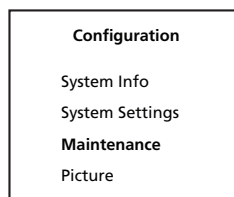
To ensure that BeoMaster 5 has the latest software version, it is important to check for available software updates. That can be done from both the BeoMaster 5* and BeoSound 5** by following this procedure:

* BeoMaster 5

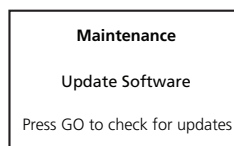
- Beo4:
Press **MENU 9** to enter the 'Configuration menu'.
- Beo5:
Press **Menu '+' 9** to enter the 'Configuration menu'.



- Beo4:
Move highlight text to 'Maintenance' and press **GO**.
- Beo5:
Move highlight text to 'Maintenance' and press **OK**.







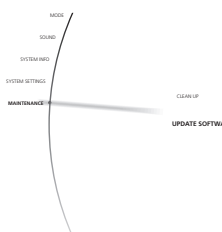
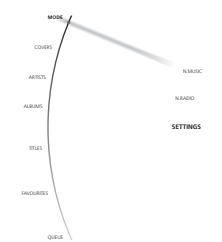
- Beo4:
Press **GO** to check for updates.
- Beo5:
Press **OK** to check for updates.



If a software update is available, a status screen will be shown stating 'An update is ready on the server'. Press **GO/OK** to start downloading the update, otherwise the following message will follow: 'No Software Update Is Available'.

** BeoSound 5

- Move the navigator arm  to 'Mode' and use the wheel  to highlight **SETTINGS**. Press **GO**.
- Move the navigator arm  to 'Maintenance' and use the wheel  to highlight 'Update Software' and press **GO**.



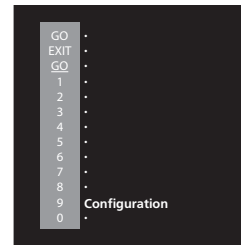
The software update automatically starts if available, otherwise the following message appears: 'No New Software Update Is Available' - 'Press **GO** to return'.

Setting up 'Client Password'

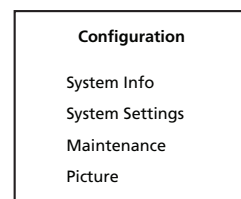
This step is very important in order to make BeoMaster 5 as secure as possible. That is done by typing in a 'Client Password' in the 'Service Settings Menu' in either BeoMaster 5* or BeoSound 5** . Please use the one of the following procedures:

* **BeoMaster 5**

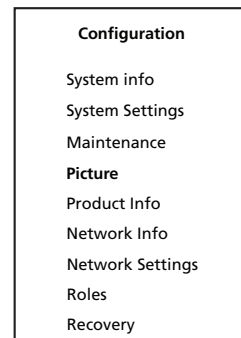
- Beo4:
Press **MENU 9** to enter the 'Configuration menu'.
- Beo5:
Press **Menu '+' 9** to enter the 'Configuration menu'.



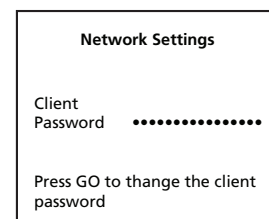
- Beo4:
Press **0 0 GO** to expand the 'Configuration menu'.
- Beo5:
Press **0 0 OK** to expand the 'Configuration menu'.



- Beo4:
Move highlight text to 'Network Settings' and press **GO**.
- Beo5:
Move highlight text to 'Network Settings' and press **OK**.





- Beo4:
Press **GO** and use **▲ ▼ ◀ ▶** to choose the characters to type in for a self-selected password.
- Beo5:
Press **GO** and use **▲ ▼ ◀ ▶** to choose the characters to type in for a self-selected password.

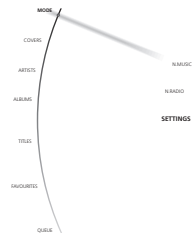


Tip!

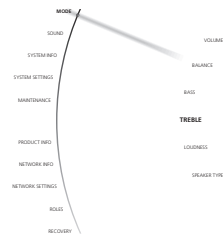
- * Press **▲** to toggle between special characters, upper/lower case letters.
- * Press **◀ ▶** to move cursor in the character list.
- * Press **▼** to close the character list.
- Press **OK** or **GO** to save the new password specified by the user (await confirmation). Write down the new password for later use (to be used when installing/setting up the 'Client PC'/MAC).
- Leave the 'Network Settings' menu by pressing **EXIT** on Beo4 or **BACK** on Beo5, and move highlight text to 'Maintenance' and press **GO/ENTER**. Choose 'Reboot' to reboot BeoMaster 5, and continue with 'Setting up Client PC' according to the preferred operating system (Windows XP on page 37, Windows Vista on page 42 or MAC on page 49).


**** BeoSound 5**

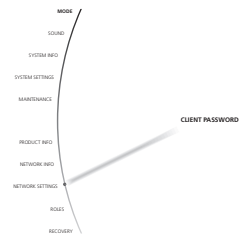
- Move the navigator arm  to 'Mode' and use the wheel  to highlight SETTINGS.




- On BeoSound 5 keyboard, press: **▶ ◀ ▶ ◀ GO** to activate 'Service Settings' (Service Settings appears in left side of the screen, containing new sub menus).

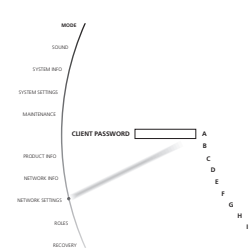


- Move the navigator arm  to 'Network Settings' and press **GO**.





- Use the wheel  to highlight the wanted character, and press **GO** enter the selection.

- ◀ Inserts characters
- ▶ Deletes a character
- ^ Changes between upper case letters and lower case letters
- STORE Saves the selected password



- Highlight **STORE** and press **GO** to save the new password specified by the user (await confirmation: '[:Xxx] | STORE'). Write down the new password for later use (to be used when installing/setting up the 'Client PC').

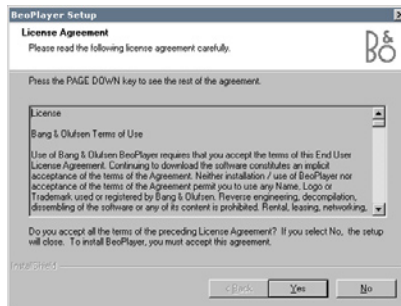
- Leave the 'Network Settings' menu by moving the navigator arm  to 'Maintenance', and use the wheel  to highlight 'Reboot'. Press **GO** to reboot BeoSound 5/BeoMaster 5, and continue with 'Setting up Client PC/MAC' according to the preferred operating system (Windows XP on page 37, Windows Vista on page 42 or MAC on page 49).

Setting up the 'Client PC' (Windows XP)

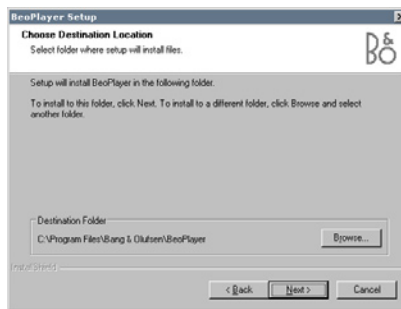
The next step is to install the 'Client software' on the 'Client PC', to enable transfer of media files onto BeoMaster 5. It can be either BeoPlayer or BeoPort software depending on the configuration.

If the customer has a BeoPort/BeoLink PC 2 in his Master Link system, BeoPort software must be installed. Otherwise just install the BeoPlayer software.

- Start the installation of the 'Client software' from the enclosed CD-ROM, and follow the on-screen instructions. This is done by selecting the appropriate .exe file from the CD-ROM (BeoPlayer/BeoPort).
- Click the 'Yes' button to accept the License Agreement.

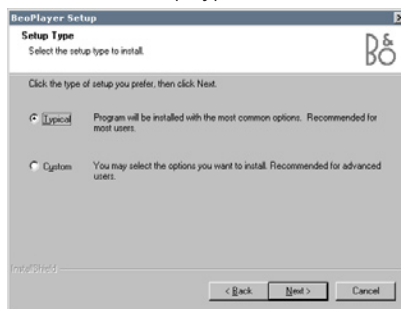


- Choose the destination location for the software to be installed.

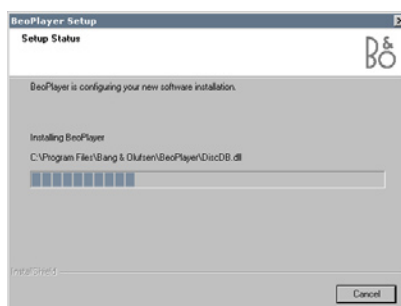


The default folder is:
 'C:\Program Files\Bang & Olufsen\BeoPlayer'.
 This can be changed by clicking the 'Browse' button and choosing another destination. Click 'Next' to continue.

- Choose the setup type for the installation. 'Typical' is recommended.

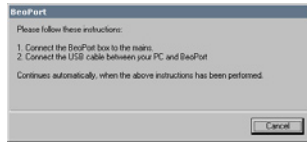


- Now several installation processes are executed, please be patient to wait for the installation to complete. When the 'Wizard' is completed, click the 'Finish' button.

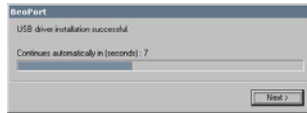


! Only if BeoPort is installed, the following 5 steps apply*:

- 1* Connect the BeoPort box to the mains.
- 2* Connect the USB cable between the PC and BeoPort box (the process automatically continues when the cable is connected).



3* Now the USB driver is installed (automatically).

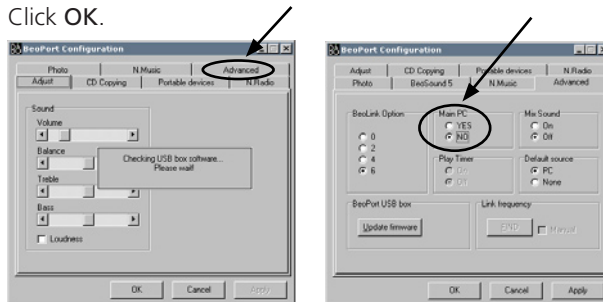


4* When the 'Wizard' is completed, click the 'Finish' button.

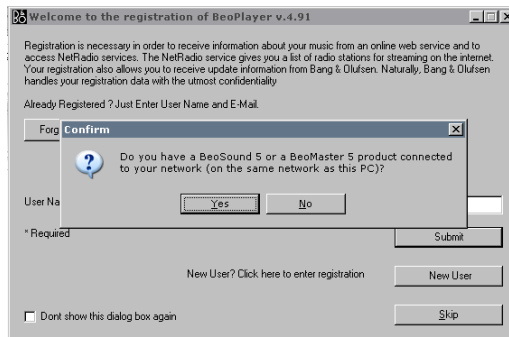


5* After the software check, click the tab 'Advanced'.

Set 'Main PC' to 'No', as shown below during the installation procedure. Click OK.



- Now the following 'dialog box' appears on the screen. Click 'Yes' to the question ('Do You have a BeoSound 5 or a BeoMaster 5 product connected to ...').



! Only one BeoMaster 5 may be connected to the network at a time. This means that in your home network you can only connect one 'Client PC' to one BeoMaster 5.

- Click 'Yes' to continue.

- If you have Windows XP with Service Pack 2 installed on the 'Client PC', click on 'Unblock' when the 'Windows Security Alert' shows.
- ! The dialogue box shown here is from an English version of Windows XP. If another language version is installed on the 'Client PC', the screen is likely to be different.



Afterwards the BeoPlayer/BeoPort automatically searches the network and tries to establish a connection to BeoSound 5/BeoMaster 5. This ensures that there is access from BeoPlayer/BeoPort to the location on the BeoMaster 5 hard disk where the media files are stored.

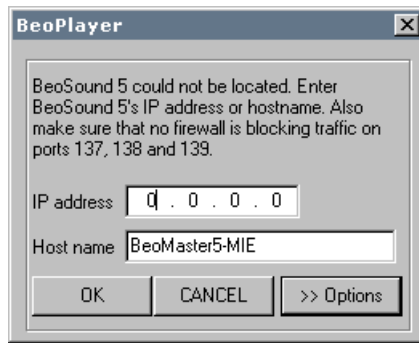
- When BeoMaster 5 is found by the 'Client PC', a prompt appears, requesting the logon password.
To be able to connect to the BeoMaster 5, it is necessary to type in the 'Client Password' for BeoMaster 5 (as written down earlier). Type in the password and click OK (please note that the password is case sensitive).



- ! In most cases the 'Client software' installation can detect and connect to BeoMaster 5, so you do not have to find and enter the IP address manually.
- In this case continue with the registration part on page 41.
- ! If the 'Client software' installation routine cannot detect and connect to BeoMaster 5, please follow the procedure on the next page.

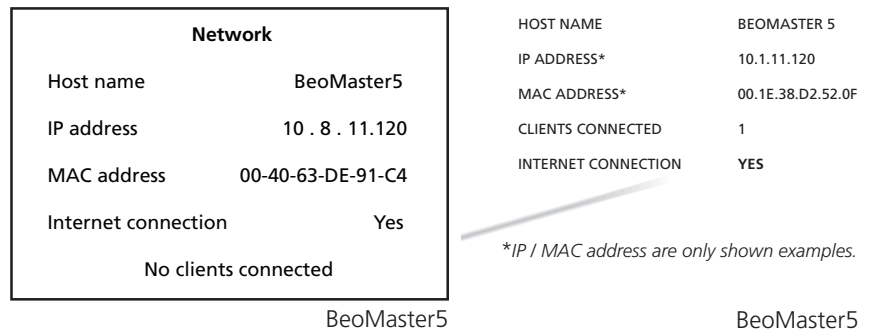
- If for some reason BeoMaster 5 cannot be found on the network, a dialog box will appear.

Fig. 1



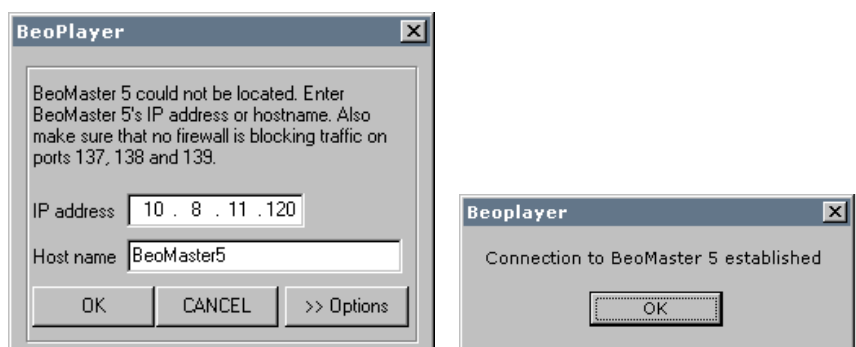
- Go to the BeoMaster 5 'Configuration' menu (to access, see eg. page 26-27 'Network Settings'). Select 'Network Info', and note the IP address and host name.

Fig. 2



- Type in the IP address and the host name in the dialog box. When you choose one of the fields, the letters or numbers will be black, and the other field will be grey. The black field indicates that you can write in it. After writing the IP address, click OK and the 'Client PC' will detect and connect to BeoMaster 5.

Fig. 3



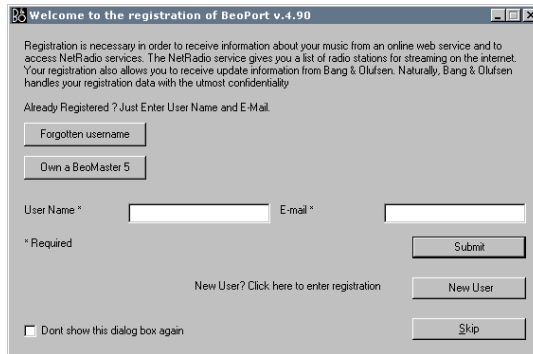
The dialogue boxes above are only examples.

The 'Client PC' is trying to locate BeoMaster 5 with IP-address 192.168.1.101. When you go to 'Network info' on BeoMaster 5, you can see that the IP address 10.8.11.120 has been assigned (fig. 2), and this is the value which should be entered in the dialog box (fig. 3).

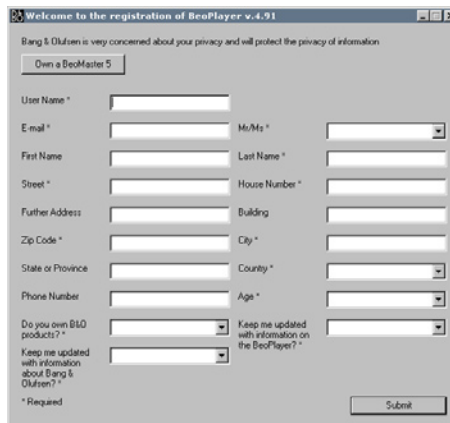
The host name is 'BeoMaster5', which also is possible to write in the dialog box.

When the connection to BeoMaster 5 is established, fill in User Name and E-mail. This is done in order to make a full registration and to get access to 'BeoPortal' and to obtain the full radio station list (N.RADIO).

- If the customer is already registered, fill-in User Name and E-mail. Click 'Submit' to register your data, and the registration of the 'Client software' is completed.



- If the customer is a new user and not registered in Bang & Olufsen's database, click the 'New User' tab, and the following dialogue box appears.



Fill in the empty fields and click 'Submit'.

- If the customer has already registered, but forgotten the username, click 'Forgotten username'. Write the customer's e-mail address and click 'Send'. The customer will then receive an e-mail with the username, and the registration step at the top of this page can be made.
- If 'Windows Security Alert' appears, click on 'Unblock' and the registration part is completed.



The dialogue box shown here is from an English version of Windows XP. If another language version is installed on the 'Client PC', the screen is likely to be different.

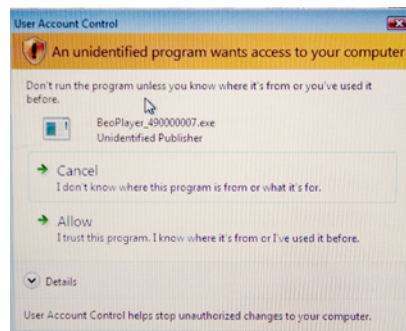
- Test the setup by selecting N.RADIO in the BeoMaster 5 menu via Beo4, or directly on BeoSound 5.
- ! Updating radio stations may take a minute. When you are able to listen to N.RADIO, your setup is complete.

Setting up the 'Client PC' (Windows Vista)

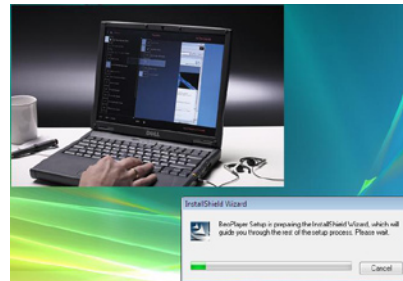
The next step is to install the 'Client software' on the 'Client PC', to enable transfer of media files into BeoMaster 5. It can be either BeoPlayer or BeoPort software depending on the configuration.

If the customer has a BeoPort/BeoLink PC 2 in his Master Link system, BeoPort software must be installed. Otherwise just install the BeoPlayer software.

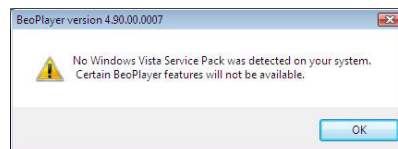
- Start the installation of the 'Client software' from the enclosed CD-ROM, and follow the on-screen instructions. This is done by selecting the appropriate .exe file from the CD-ROM (BeoPlayer/BeoPort).
- Now the built-in security control (User Account Control) pops up a warning, prompting the user to allow the installation process to start. In this case, accept the installation process to start by clicking the 'Allow' button.





- Now the 'Install Shield Wizard' starts to run (illustrated below).



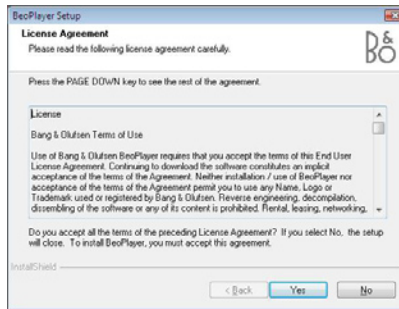
- If the Windows Vista installation on the customers 'Client PC' is not recently updated, an information box will appear (see below).



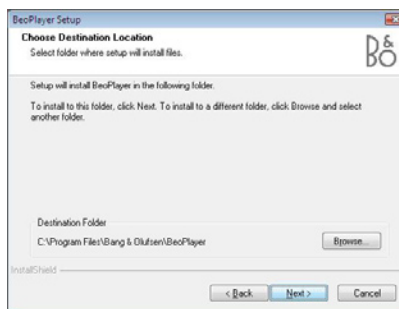
It is very important that 'Service Pack 1' (KB 936330) for Windows Vista is installed before the installation is continued. If this is not done, the BeoPlayer will not work properly.

Please close the information box by clicking the  and then install all updates for Windows Vista (click , choose 'Control Panel' and double click 'Windows Update'. When this is done, continue with the procedure on the next page.

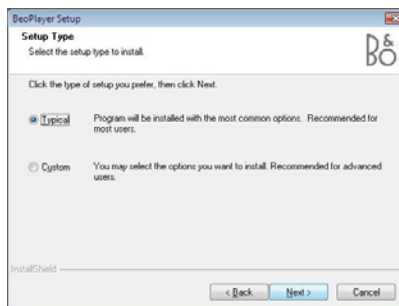
- The next step is to accept the 'License Agreement'. Read the information and click 'Yes' to continue.



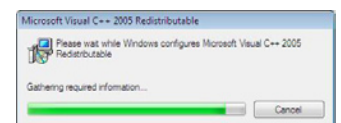
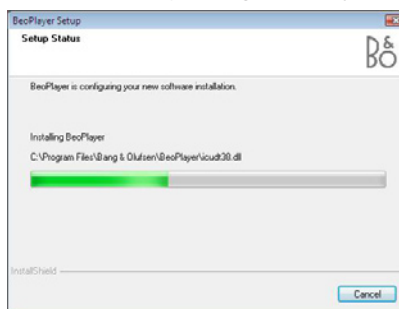
- Choose the destination folder for BeoPlayer to be installed. The default folder is 'C:\Program Files\Bang & Olufsen\BeoPlayer'. This can be changed by clicking the 'Browse' button and choosing another destination. Click 'Next' to continue.



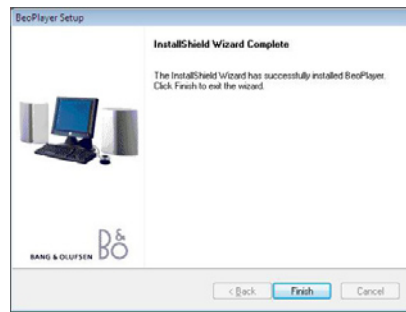
- Now choose the 'Setup Type'. Choose 'Typical' to ensure that all necessary components for BeoPlayer/BeoPort is installed. Click 'Next' to continue.



- Now several installation processes automatically are executed. Just wait for approx. 1-2 minutes (depending on the system speed) for the process to end.

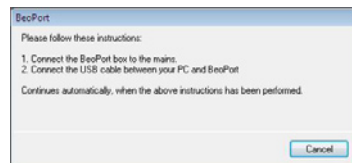


- The 'InstallShield Wizard' is now completed. Click 'Finish' to end the BeoPlayer setup procedure.

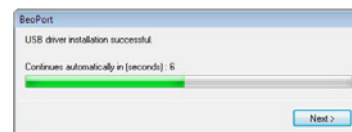
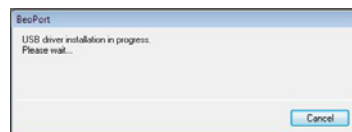


! Only if BeoPort software is installed, the following 5 steps apply*:

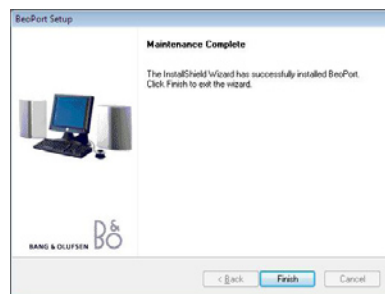
- 1* Connect the BeoPort box to the mains.
- 2* Connect the USB cable between the PC and BeoPort box (the process automatically continues when the cable is connected).



3* Now the USB driver is installed (automatically).

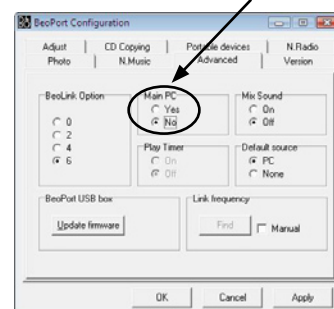
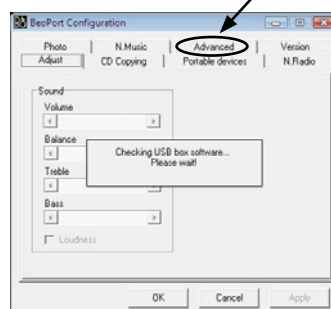


4* When the 'Wizard' is completed, click the 'Finish' button.

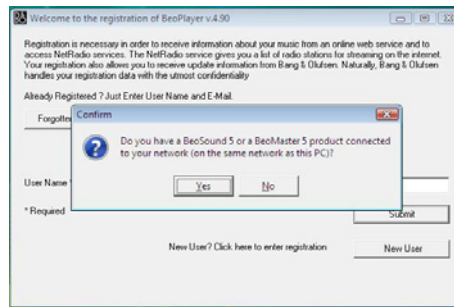


5* After the software check, click the tab 'Advanced'.

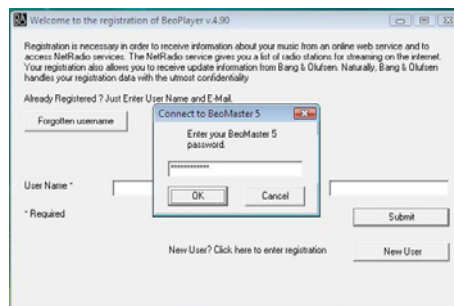
Set 'Main PC' to 'No', as shown below during the installation procedure. Click OK.



- Now BeoPlayer automatically runs, and a 'Confirm Box' appears on the screen. Click 'Yes' to 'Do you have a BeoSound 5 or a BeoMaster 5 ...'



- When BeoMaster 5 is found by the 'Client PC', a prompt appears requesting the logon password. To be able to connect to the BeoMaster 5, it is necessary to type in the 'Client Password' for BeoMaster 5 (as written down earlier). Type in the password and click OK (please note that the password is case sensitive).



- If 'Windows Security Alert' blocks BeoPlayer, click 'Unblock' to establish the connection.

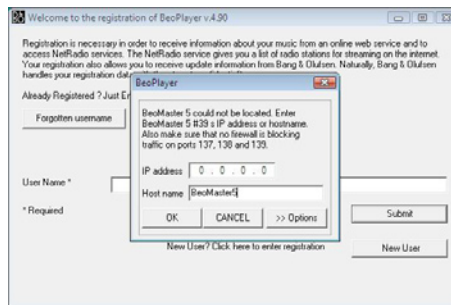


- ! In most cases the 'Client software' installation can detect and connect to BeoMaster 5, so you do not have to find and enter the IP address manually. In this case continue with the registration part on page 47.

If the 'Client software' installation routine cannot detect and connect to BeoMaster 5, please follow the procedure on the next page.

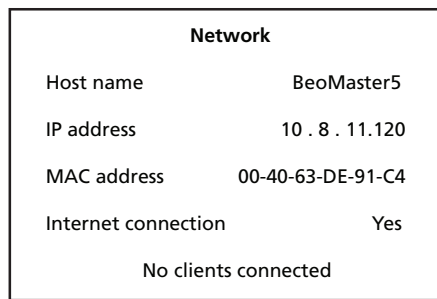
- If for some reason BeoMaster 5 cannot be found on the network, a dialog box will appear (fig. 1).

Fig. 1



- Go to the BeoMaster 5 'Configuration' menu (to access, see eg. page 26-27 'Network Settings'). Select 'Network Info', and note the IP address and host name.

Fig. 2



HOST NAME	BEOMASTER 5
IP ADDRESS*	10.1.11.120
MAC ADDRESS*	00.1E.38.D2.52.0F
CLIENTS CONNECTED	1
INTERNET CONNECTION	YES

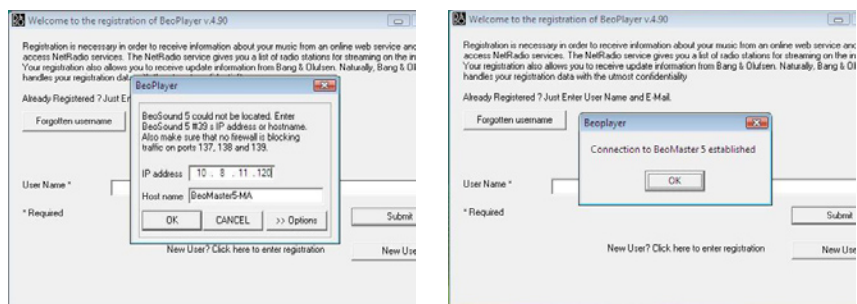
**IP / MAC address are only shown examples.*

BeoMaster5

BeoMaster5

- Type in the IP address and the host name in the dialog box. When you choose one of the fields, the letters or numbers will be black, and the other field will be grey. The black field indicates that you can write in it. After writing the IP address, click OK and the 'Client PC' will detect and connect to BeoMaster 5.

Fig. 3



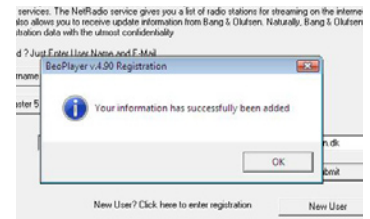
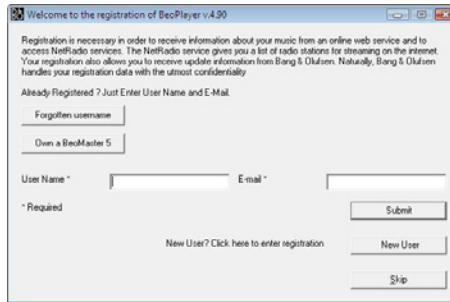
The above shown dialogue boxes are only examples.

The 'Client PC' is trying to locate BeoMaster 5 with IP-address 192.168.1.101. When you go to 'Network info' on BeoMaster 5, you can see that the IP address 10.8.11.120 has been assigned (fig. 2), and this is the value which should be entered in the dialog box (fig. 3).

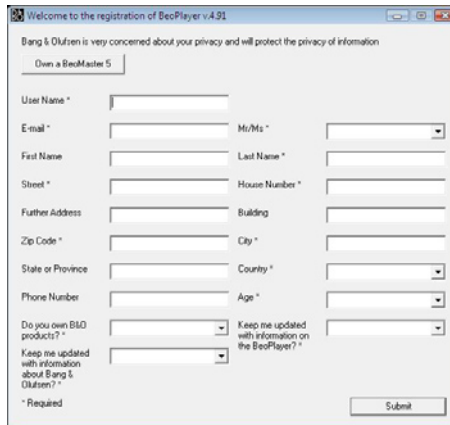
The host name is 'BeoMaster5', which also is possible to write in the dialog box.

When the connection to BeoMaster 5 is established, fill in User Name and E-mail. This is done in order to make a full registration and to get access to 'BeoPortal' and to obtain the full radio station list (N.RADIO).

- If the customer is already registered, fill-in User Name and E-mail. Click 'Submit' to register your data, and the registration of the 'Client software' is completed.

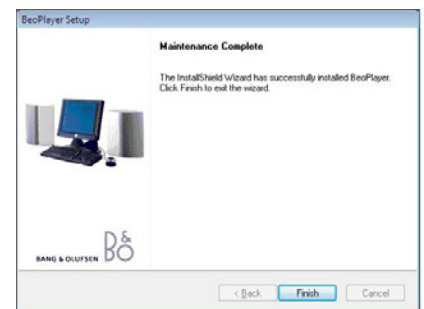


- If the customer is a new user and not registered in Bang & Olufsen's database, click the 'New User' tab, and the following dialogue box appears.



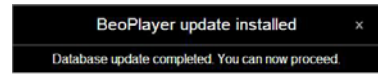
Fill in the empty fields and click 'Submit'.

- If the customer has already registered, but forgotten the username, click 'Forgotten username'. Write the customer's e-mail address and click 'Send'. The customer will then receive an e-mail with the username, and the registration step at the top of this page can be made.
- Now BeoPlayer automatically opens. If a software update is available, the user is prompted to upgrade the BeoPlayer/BeoPort software (recommended). Click 'Now' to start the upgrade procedure. When the upgrade is done click the 'Finish' button.



To be continued on the next page.

- Now a few more details is updated. When these are finished click the '✕' in the upper right corner.



- Test the setup by selecting N.RA.

Setting up the 'Client MAC' (Macintosh)

The next step is to install the 'Client software' on the 'Client MAC', to enable transfer of media files into BeoMaster 5. The software to be installed on the 'Client Mac' is called 'BeoConnect'.

The 'BeoConnect' software is enclosed with BeoMaster 5, but it is recommended to use the latest version of 'BeoConnect', which is available at:

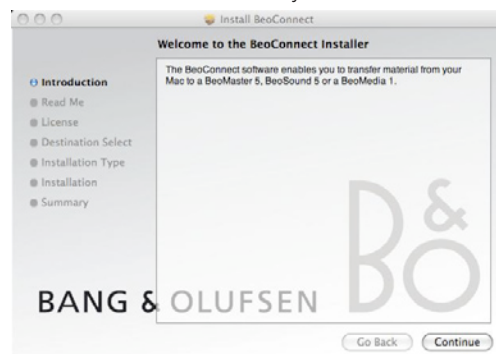
<http://www.bang-olufsen.com/softwaredownloads>

Start the installation of the 'Client software' from the enclosed CD-ROM, and follow the on-screen instructions.

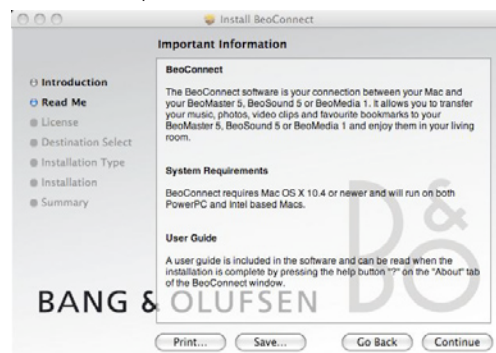
- Select the 'BeoConnect installer packet' from the CD-ROM. When the warning below pops up, click 'Continue' to allow the process to continue.



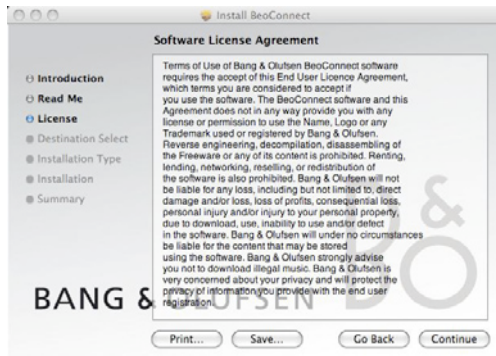
- The installation is now ready to start. Click 'Continue' to proceed.



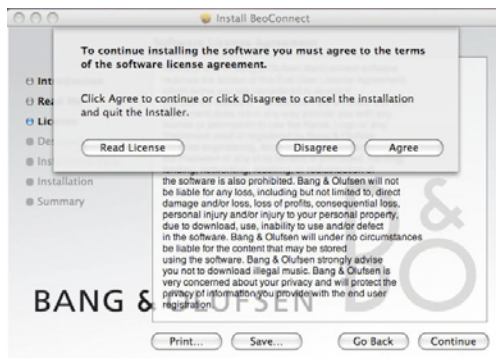
- Read the 'Important Information' box, and click 'Continue' to proceed.



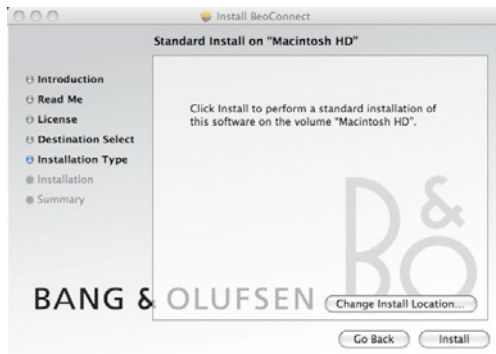
- Read the 'Software License Agreement' box, and click 'Continue' to proceed.



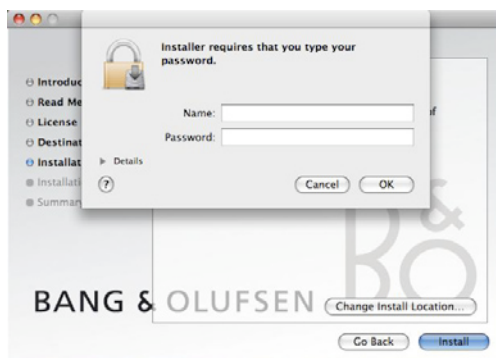
- To accept the agreement click 'Agree' to proceed.



- To choose another location to install BeoConnect, click 'Change Install Location...'. To accept the default location, click 'Install'.

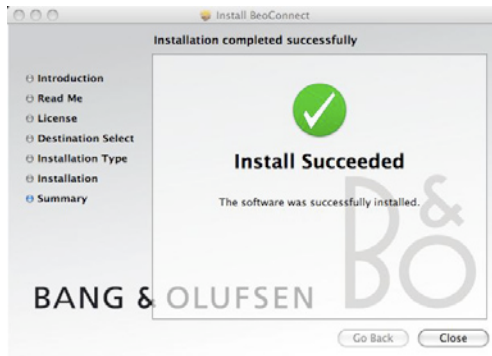


- In some cases it is necessary to type in a name and password to allow the installation of BeoConnect. Type in the two fields and click 'Install'.

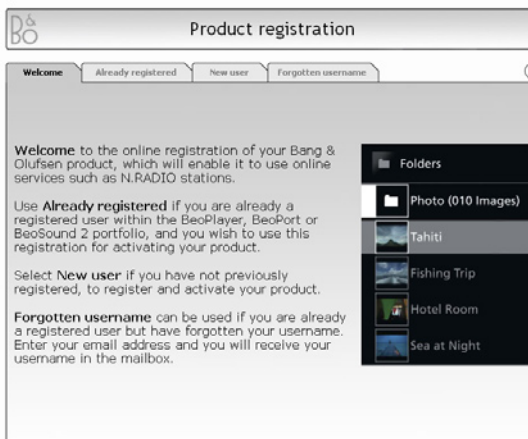


Now several installation processes are executed. Simply wait for the processes to end.

- When the installation procedure has finished, click 'Close' to end.



- Open 'BeoConnect' from the 'Dock'* on the desktop.
- Now the registration part appears on the screen (only the first time 'BeoConnect' is opened). In order to use e.g. 'N.Radio', a registration of the BeoMaster 5/ BeoSound 5 has to be made. Follow the information on the tab 'Welcome'.



- If the customer is already registered in Bang & Olufsen's database, click the 'Already registered' tab, fill in the four empty fields and click 'Submit'. If the customer is new, continue to the next step.



* The 'Dock' is the bar of icons at the bottom or side of the screen.

- If the customer is a new user and not registered in Bang & Olufsen's database, click the 'New user' tab, fill in the empty fields and click 'Submit'.
- The serial number can be read out in the BeoMaster 5/BeoSound 5 'Product Info' menu* (HW serial), or located at the label on the back part of BeoMaster 5.

*If a BeoSound 5 is present in the setup, type the serial number for BeoSound 5.
If only a BeoMaster 5 is present, type the serial number for BeoMaster 5.*

- If the customer has already registered, but forgotten the username, click 'Forgotten username'. Write the customer's e-mail address and click 'Send'. The customer will then receive an e-mail with the username, and the registration step on the previous page can be made.
- The last step is to make the connection between the 'Client MAC' and the BeoMaster 5. Type in Name (or IP Address) and Password (refer to the password written down earlier). Click 'Connect'.


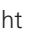

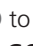

- ! When the connection is established, the 'Connect' button is greyed out.

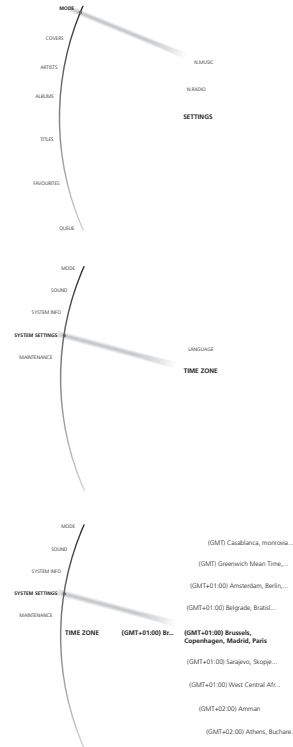
* Access the service settings menu, and choose 'Product Info' (please refer to page 26-27, step 1-3, and choose 'Product Info' instead of 'Network Info'). Here the serial numbers can be read out.

Setting up time zone

To ensure BeoSound 5/BeoMaster 5 seeks and updates downloaded software on a correct scheduled weekly basis, it is necessary to set up the time zone. This can be made from both BeoSound 5 and BeoMaster 5.

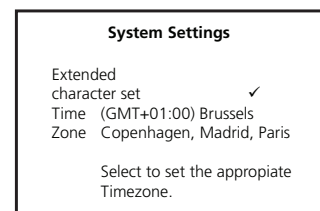
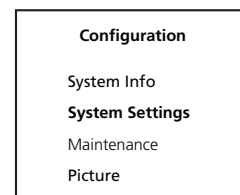
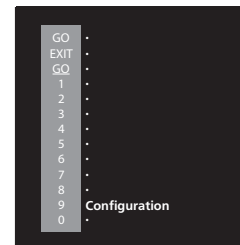
BeoSound 5:

- Move the navigator arm  to 'Mode' and use the wheel  to highlight SETTINGS. Press **GO**.
- Move the navigator arm  to SYSTEM SETTINGS and use the wheel  to highlight TIME ZONE and press **GO**.
- Use the wheel  to highlight the correct time zone, and press **GO** to save the setting.



BeoMaster 5:

- **Beo4:**
Press **MENU 9** to enter the 'Configuration menu'.
- **Beo5:**
Press **Menu '+' 9** to enter the 'Configuration menu'.
- **Beo4:**
Move highlight text to 'System Settings' and press **GO**.
- **Beo5:**
Move highlight text to 'System Settings' and press **OK**.
- **Beo4:**
Move highlight text to 'Time Zone' and use **◀ ▶** to choose the correct time zone.
Press **GO** to save the settings.
- **Beo5:**
Move highlight text to 'Time Zone' and use **◀ ▶** to choose the correct time zone.
Press **OK** to save the settings.
- Continue on the next page to set the date and time.



Setting up date and time

Synchronisation of date and time is automatically performed (the local time is synchronised from an internet time server), and is therefore normally not necessary to adjust.

If it is necessary to set the date and time manually, click the 'Date and Time' icon on the Service Menu to make the setting.

Please refer to page 28 for information about accessing the 'Service Menu'.

When the settings has been made, confirm that the date and time on the BeoMaster 5 is synchronised with the 'Client PC'/MAC.

To exit the Service Menu, double-click the 'Exit Service Menu' icon on the desktop.

Technical information

Symptom

During the installation of BeoPlayer/BeoPort, no connection is established when entering the password. The user is prompted to enter the IP-address - but still no result. The IP-address is entered again but with same result.

Cause

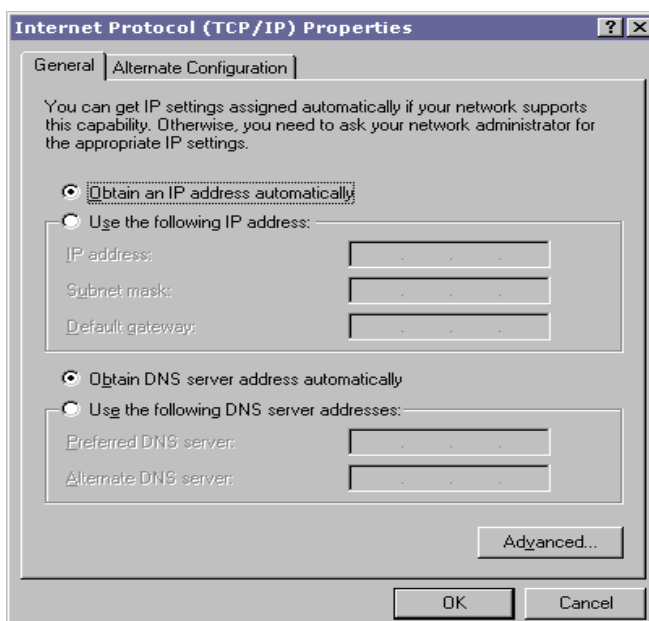
A reason for the problem could be the firewall on the 'Client PC'. BeoMaster 5 needs to communicate with the 'Client PC' through certain ports. If the 'Client PC' does not allow communication through these ports, the connection cannot be established.

Solution

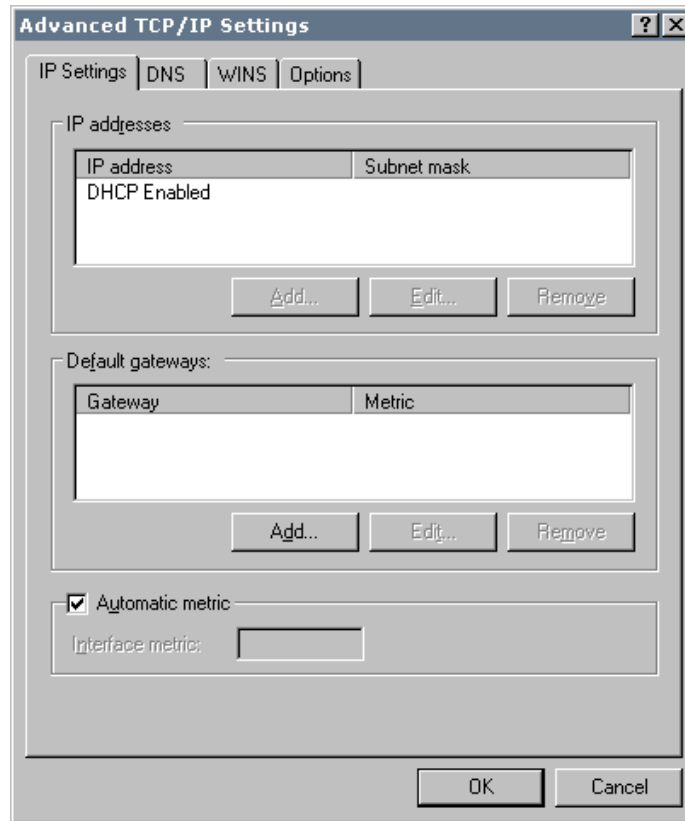
To solve this problem it is important to do the following on the 'Client PC', if connection problems occur.

To enable 'NetBIOS over TCP/IP' on the 'Client PC', follow these steps:

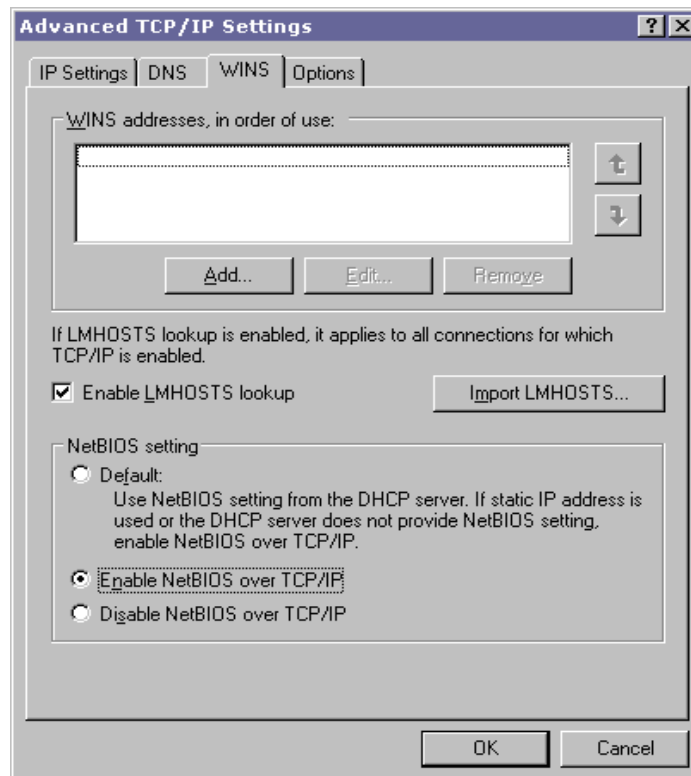
- Click 'Start', highlight 'Settings' and click on 'Control Panel'.
- Double click on 'Network Connections'.
- Right click the network connection you will use for communication and left click 'Properties'.
- Scroll to the bottom of the window and left click on the 'Internet Protocol (TCP/P)'.
- Left click 'Properties' and the following screen appears.



- Left click 'Advanced' in the lower right hand corner.



- Left click on the WINS tab.



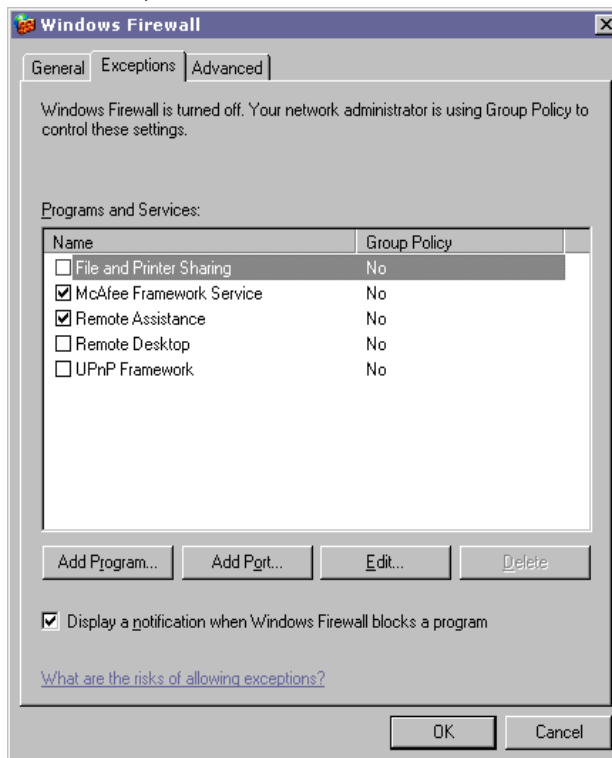
- Select 'Enable NetBIOS over TCP/IP'.
- Click OK.

Enabling ports in 'Client PC' – Only for Windows XP with Service Pack 2

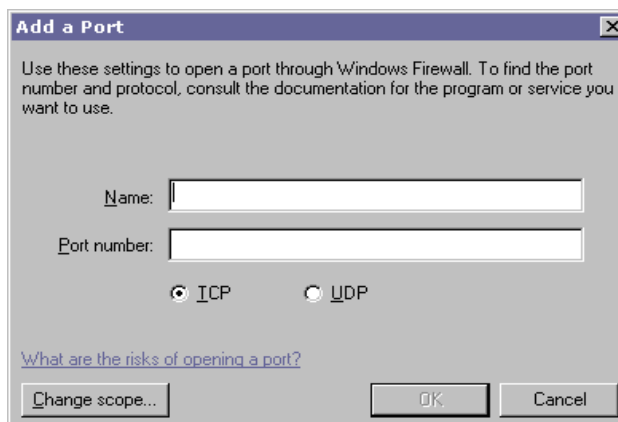
Port No.	Protocol
137	UDP
138	UDP
139	TCP

To open the above ports in the firewall on the 'Client PC', follow these steps:

- Click 'Start', highlight 'Settings' and click on 'Control Panel'.
- Double click on 'Windows Firewall'.
- Choose 'Exceptions'.



- Left click on 'Add Port'.



- Enter a name for the port, e.g. BeoMaster 5 (no requirements for the name).
- Enter the port numbers mentioned above one by one and remember to tick TCP or UDP each time.
- To save all settings, press **OK** until all dialogue boxes are closed.
- Retry to connect to BeoMaster 5.

Useful information

Maintaining system software

BeoMaster 5 is updated automatically via the Internet, as BeoMaster 5 contacts the server at Bang & Olufsen on a weekly basis to check whether newer versions of the installed program elements are available. If this is the case, the update is downloaded in the background and stored on the hard disk without disturbing the user.

The following program elements in the BeoMaster 5 setup are updated:

- Operating system (Embedded XP).
- Antivirus program (definition list only).
- Bang & Olufsen BeoMaster 5 software.
- Firmware (BeoSound 5 + Master Link Module).

The new BeoMaster 5 program update is automatically installed at a predefined time, provided that BeoMaster 5 is not in use. If it is in use, the system waits until the customer has exited the source menu, for example, PHOTO or N.RADIO.

'Client PC' BeoPlayer/BeoPort

New BeoPlayer/BeoPort software (Windows XP or Vista)



A new version of BeoPlayer/BeoPort is saved on BeoMaster 5. The customer receives a message on the 'Client PC', informing the user that an update is available for installation, when the BeoPlayer/BeoPort program is started.

A new version can be installed without removing the previous version first.

- ! The registration process should always be completed.

Client MAC BeoConnect

Users of the BeoConnect software are not automatically informed about new updates. Updates has to be discovered by the user and manually installed to the MAC. Updates can be downloaded from:

<http://www.bang-olufsen.com/softwaredownloads>

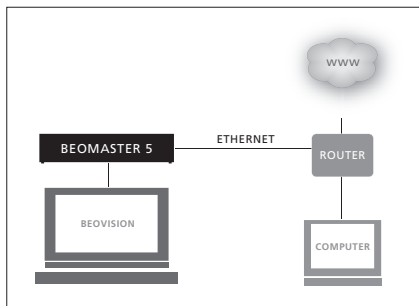
If the customer is home

- Please inform the customer how to open the BeoPlayer/BeoPort or BeoConnect on the 'Client PC'/MAC, and how to look up the user guide.

Then inform the customer:

- How to access BeoMaster 5 via the TV (PC listed in Beo4).
- How to select a BeoMaster 5 source and to bring up the menu overlay.
- How to access BeoSound 5 via the navigator.
- How to access N.RADIO and N.MUSIC via Beo4 (in the LIST)/Beo5.

BeoMaster/BeoSound 5 – Installation overview



BeoMaster 5 in a 'Stand-alone setup'.

1. Make connections

Three different scenarios are described, i.e. a 'Stand-alone setup', an 'Audio Master setup', and a 'Fully Integrated Audio Master setup'.^{*1}

Refer to page 9

2. Secure the cables

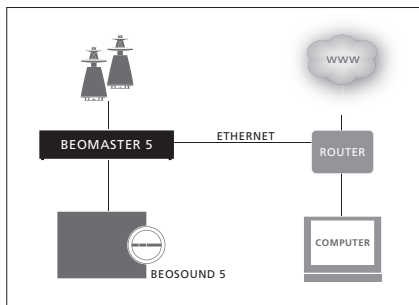
In the two setup scenarios with BeoSound 5 it is important that the cables are secured correctly in the BeoSound 5 base.

Refer to page 18

3. Set up remote control, 'Roles' and language

Set up the remote control for use with a BeoMaster 5. Set up 'Roles' for BeoMaster/BeoSound 5, and set up the preferred language in the BeoSound 5.

Refer to page 19–20



BeoMaster and BeoSound 5 in an 'Audio Master setup'.

4. Set up screen resolution

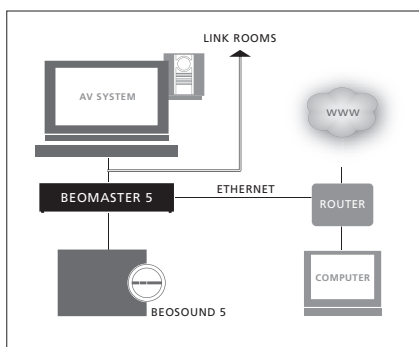
Optimise the picture format for the connected television.

Refer to page 22

5. Set up 'Speaker type'

In the two scenarios involving BeoSound 5, set up the Power Link options.

Refer to page 25



BeoMaster and BeoSound 5 in a 'Fully Integrated Audio Master setup'.

6. Test the network connection

The connection can be tested from either BeoSound 5 or BeoMaster 5.^{*2}

Refer to page 26

7. Update software

To ensure that BeoMaster 5 has the latest software version, check for available updates.

Refer to page 34

8. Set up 'Client password'

NOTE! This step is important in order to make BeoMaster 5 as secure as possible.^{*3}

Refer to the page 35

^{*1}BeoVision 9 For information on how to implement BeoMaster 5 in a BeoVision 9, refer to page 12.

^{*2}DHCP Server – Yes/No? Refer to page 28 for access to the Service menu, and to page 30 for information on network settings.

^{*2}Wireless network Refer to page 28 for access to the Service menu, and to page 30 for information on network settings.

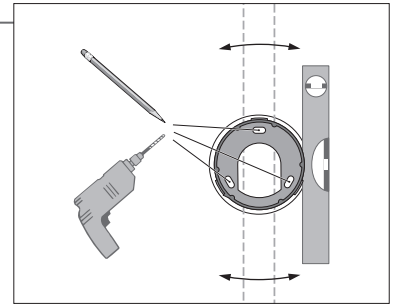
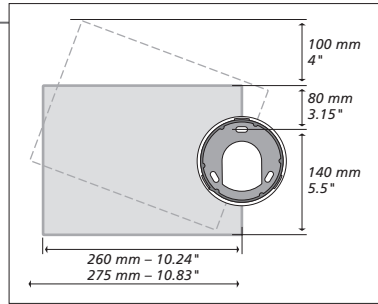
^{*3}Client PC Refer to page 37 for information about Windows XP®, to page 42 for information about Windows Vista®, and to page 49 for information about MAC®

BeoSound 5 wall mount – standard wall bracket

BeoSound 5 must be placed on a wall, or on one of the optional accessories. Here is described how to fasten it on a wall – using the standard wall bracket. The Guides enclosed with the optional accessories explain how to fasten BeoSound 5 to the optional accessories.

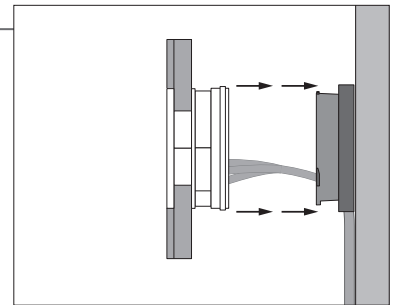
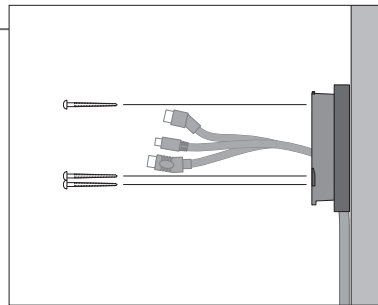
Place the wall bracket

Find the correct place for the music system, before mounting it on the wall. Use the wall bracket and spacer as a template to mark up where to drill the holes.



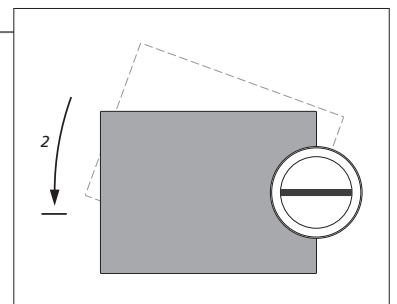
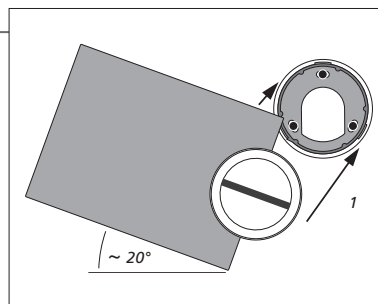
Fasten the wall bracket

Use the correct size and type of screws and wall plugs – taking into account the construction and condition of the wall. Use three screws/fasteners with a minimum load rating of 3.5 kg (8 lbs.). Insert the cables as described on the next page, before you fasten the music system.



Fasten the music system

Align and position the music system on the wall bracket, and then turn the music system gently as far as it will go.



Light partition walls

If you intend to hang the music system on a gypsum wall (also known as drywall or wallboard), the wall bracket must be fastened to a vertical stud. Use one lag screw (5 mm – 0.2"), which penetrates the gypsum, and is screwed a minimum of 25 mm (1") into a vertical stud. For stability, use two additional screws of a type intended for gypsum walls. Mounting was evaluated for use on a drywall surface.