

# Beo4

## Guide

# Contents

## Using your Beo4 remote control, 3

### Beo4 buttons in detail, 4

- Daily and advanced operation with Beo4 buttons

### Customise Beo4, 5

- Add an extra 'button'
- Move extra 'buttons'
- Remove an extra 'button'
- Set up Beo4
- Beo4 zones (ZONE?)
- Beo4 options (OPTION?)
- Beo4 configuration (VIDEO?)
- Beo4 modes (MODE?)
- Reset your Beo4 (RESET?)

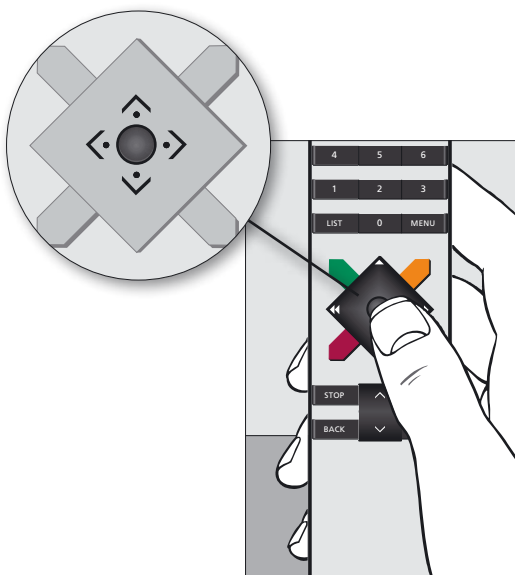
## Conversion, 12

### Maintenance, 13

- Cleaning Beo4
- Changing the batteries

### Lexicon, 14

## Using your Beo4 remote control



Daily operations are carried out by pressing a single button on Beo4, or by pressing a few buttons in a logical and straightforward sequence.

But the Beo4 remote control incorporates more functions than just the actual buttons. Extra sources can be switched on, and additional functions can be obtained via the display. “Buttons” for these functions can be brought up on the Beo4 display via the LIST button. [Refer to the chapter ‘Customise Beo4’.](#)

## Beo4 buttons in detail ...



*Move your mouse around this illustration for information about the Beo4 buttons.*

## Customise Beo4 ...

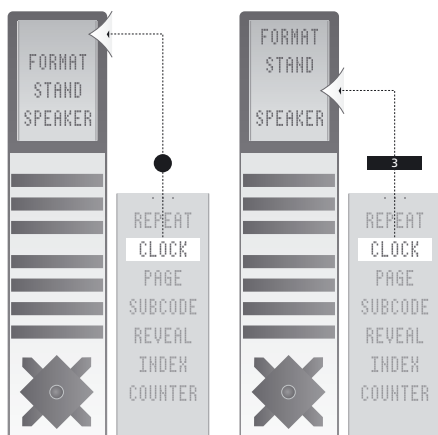
The Beo4 buttons give direct remote control of a large number of functions, and the Beo4 display gives you access to even more functions.

Whenever a source is displayed on Beo4 (TV, RADIO, etc.), you can press the LIST button and bring up extra functions in the display to help you operate that source, just as if you were bringing up extra buttons. You can also switch on extra equipment connected to your television.

You can customise a Beo4 to suit your product, and change the order in which these extra functions appear when you bring them up.

Note that Beo4 contains a list of all of Bang & Olufsen's extra audio and video functions, but only functions supported by your product work when you bring them up in the Beo4 display.

## >> Customise Beo4 ...



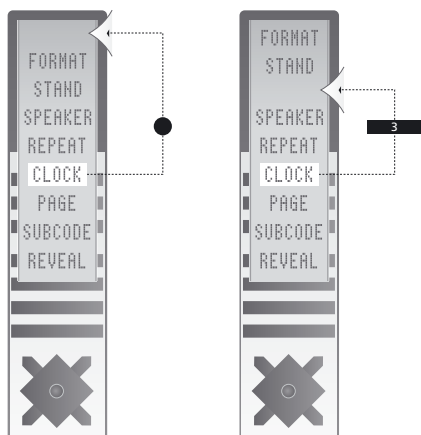
*Add an extra 'button' to Beo4, either to the preset position or to a specific position.*

### Add an extra 'button'

When you add a new function to the Beo4 list, you can bring up this new 'button' in the Beo4 display.

- > Press and hold the standby button down.
- > Press **LIST** to get access to the Beo4 setup function.
- > Let go of both buttons. ADD? appears in the display.
- > Press the **centre** button and use  $\wedge$  to select [AV?](#), [LIGHT?](#) or [CNTROL?](#)
- > Press the **centre** button to bring up the list of extra 'buttons' to add from.  
The first 'button' appears in the display, it flashes on and off.
- > Press  $\wedge$  or  $\vee$  to move forwards or backwards in the list of extra 'buttons'.
- > Press the **centre** button to add and place the 'button' on its preset position in the list, or ...
- > ... press **1 – 9** to insert the 'button' at a specific position in the list.
- > ADDED appears, indicating that the 'button' has been added. Long press on **BACK** will leave the setup.

## >> Customise Beo4 ...



*Move extra 'buttons', either to the top of the list or to a specific position.*





### Move extra 'buttons'

You can rearrange the order in which the extra 'buttons' appear when you press LIST.

- > Press and hold the standby button down.
- > Press **LIST** to get access to the Beo4 setup function.
- > Let go of both buttons. ADD? appears in the display.
- > Press **LIST** or **↗** to display MOVE? on Beo4.
- > Press the **centre** button and use **↗** to select [AV?](#), [LIGHT?](#) or [CNTROL?](#)
- > Press the **centre** button to bring up the list of extra 'buttons'. The first 'button' appears in the display.
- > Press **↗** or **↘** to move forwards or backwards in the list of extra 'buttons'.
- > Press the **centre** button to move and place the displayed 'button' as the first in the list, or ...
- > ... press **1 – 9** to move the 'button' to a specific position in the list.
- > MOVED appears, indicating that the 'button' has been moved. Long press on **BACK** will leave the setup.

### **Remove an extra 'button'**

You can remove any of the extra 'buttons' that are available when you press LIST.

- > Press and hold the standby button down.
- > Press **LIST** to get access to the Beo4 setup function.
- > Let go of both buttons. ADD? appears in the display.
- > Press **LIST** or  to display REMOVE? on Beo4.
- > Press the **centre** button and use  to select [AV?](#), [LIGHT?](#) or [CNTROL?](#)
- > Press the **centre** button to bring up the list of extra 'buttons'. The first 'button' appears in the display.
- > Press  or  to move forwards or backwards in the list of extra 'buttons'.
- > Press the **centre** button to remove the 'button' shown in the display.
- > REMOVED appears, indicating that the 'button' has been removed. Long press on **BACK** will leave the setup.



## Set up Beo4

If you buy a new Beo4 you can set it up for your television.

- > Press and hold the standby button down.
- > Press **LIST** to get access to the Beo4 setup function.
- > Let go of both buttons. **ADD?** appears in the display.
- > Press **LIST** or **↗** to display [ZONE?](#), [CONFIG?](#) or [MODE?](#) on Beo4.
- > Press the **centre** button to select the setup you want.
- > Press **↗** or **↘** to display the setting you want on Beo4.
- > Press the **centre** button to store the configuration.
- > **STORED** appears, indicating that the configuration has been stored.  
Long press on **BACK** will leave the setup.

## Beo4 zones (ZONE?)

**ALL** Used if you have one Beo4 in each room for all your products (default setting).

**VIDEO** Used if you have more than one Beo4 in a room and you want to use it to activate both video and audio sources via your video product.

**AUDIO** Used if you have more than one Beo4 in a room and you want to use it to activate both audio and video sources via your audio product.

**LINK** Used if you have, for example, more than one television in the same room (Option 4). Refer to the Guide enclosed with your product.

>> *Customise Beo4 ...*

### **Beo4 options (OPTION?)**

Appears when you access the Beo4 setup mode. Enables you to preprogram a Bang & Olufsen system setup.

**V.OPT** Video options

**A.OPT** Audio options

**L.OPT** Link options

For further information, refer to the Guide enclosed with your product.

### **Beo4 configuration (VIDEO?)**

For selecting a dedicated video product setup for Beo4.

**VIDEO 5** Supports, for example, video products for the American and European markets.

**VIDEO 6** Supports, for example, BeoVision Avant and earlier BeoVision MX models.

For further information, contact your local Bang & Olufsen retailer.

### **Beo4 modes (MODE?)**

**MODE 1** *When a Beo4 remote control is in MODE 1, the navigation button is used for menu operation, and menu and source operation are separated.*

*MODE 1 should be used if:*

- all your televisions in your video setup contain the 'BEO4 SETTING' menu and it is set to 'NAVIGATION BUTTON'.

**MODE 2** *When a Beo4 remote control is in MODE 2, the navigation button does not work and menu and source operation are not separated. MODE 2 should be used if:*

- one of your televisions in your video setup does not contain the 'BEO4 SETTING' menu, or ...
- ... you also use a Beo4 remote control without navigation button in your video setup.

Set the 'BEO4 SETTING' menu to 'NO NAVIGATION BUTTON', where possible.

### **Reset your Beo4 (RESET?)**

For resetting your Beo4 to default, all settings will be deleted. Select RESET? from the LIST menu.

## Conversion ...



Beo4  
- type 1710



Beo4  
- type 1621/22/24/25

### New functions on Beo4 (type 1710)

**RECORD** is in the LIST menu and is used to make a recording.

**PLAY** starts playback of a DVD, recording etc.

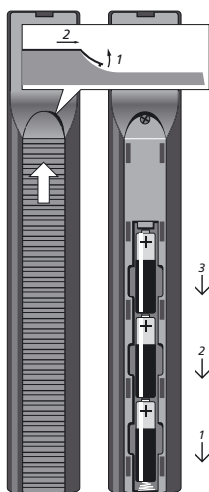
**BACK** is used to step back in menus and closes the LIST menu.

**STOP** is used to stop playback of a source, for example a DVD.

**Navigation and centre buttons** (previous **GO**) are used for menu operation.

**Arrow buttons** are used for source operation.

## Maintenance ...



**CAUTION!** Do not expose batteries to excessive heat such as sunshine, fire or the like!

### Cleaning the Beo4 ...

Wipe the Beo4 remote control with a soft, lint-free, wet cloth which is wrung firmly.

### Changing the batteries

When BATTERY appears in the Beo4 display, it is time to change the batteries in the remote control.

The Beo4 requires three batteries (placed under the lid on the back). We recommend that you use 1.5 volt (size AAA) Alkaline batteries only.

Replace the batteries as shown in the illustration.

When you have replaced the batteries, you must wait for about 10 seconds until the display reads TV. The Beo4 remote control is then ready to operate again.

*Note: We recommend that you keep a finger on top of the batteries until the lid is in place.*

## Lexicon ...

### A

**A.AUX (audio auxiliary source)** For switching on any extra equipment connected to your Bang & Olufsen audio system.

**ADD?** Appears as an option in the Beo4 setup mode. Enables you to add extra "buttons" to the Beo4 display. [Refer to 'Add an extra 'button''](#).

**A-DTV2** For selecting AV and then DTV2.

**A-DVD2 (AV video recorder 2)** For selecting AV and then DVD2.

**A.MEM (audio recorder)** Appears in the display when you press the Beo4 A.MEM button. Any operation you carry out on Beo4 will be directed to your Bang & Olufsen audio recorder.

**A.MEM2** For switching on a second audio recorder connected to your Bang & Olufsen audio system.

**A-N.MUS (AV Net music)** For selecting AV and then N.MUSIC.

**A-N.RA (AV Net radio)** For selecting AV and then N.RADIO.

**A.OPT (audio option)** For programming a system setup for audio systems.

**A-PC (AV PC)** For selecting AV and then PC.

**A.SETUP (audio setup)** Gives access to a list of extra "buttons" required for sound adjustment of certain Bang & Olufsen audio systems. **A.SETUP** must be added in order to be able to reveal the following »buttons« for sound adjustment:

**BASS** – gives access to adjusting Bass levels for an audio system, [refer to BASS for further information](#).

**TREBLE** – gives access to adjusting Treble levels for an audio system, [refer to TREBLE for further information](#).

**LOUDNSS (loudness)** – gives access to setting Loudness to On or Off, [refer to LOUDNSS for further information](#).

**AV** Indicates that the audio/video function is activated, transferring, for example, TV sound to the speakers connected to an audio system or vice versa. This only applies if your Video and Audio systems are interconnected.

**AV?** For configuring AV settings. [Refer to AV](#).

**A-V.AUX (AV V.AUX)** For selecting AV and then V.AUX.

### B

**BASS** For sound adjustment of bass levels in certain Bang & Olufsen systems. In order to get access to BASS you must add either [A.SETUP](#) or [V.SETUP](#) as appropriate.

**BATTERY** Indicates that it is time to change the batteries in the Beo4 remote control.

**BOOK** For future use.

### C

**CAMERA (Camcorder)** For selection of CamCorder input on Bang & Olufsen video systems.

**CD (compact disc player)** Appears in the display when you press the Beo4 CD button. Any operation you carry out on the Beo4 will be directed to your Bang & Olufsen CD player.

>> *Lexicon ...*

**CLEAR** For clearing program numbers on recent Bang & Olufsen TV sets.

In order to get access to **CLEAR**, [V.SETUP](#) must be added first.

**CLOCK** Displays the time on certain Bang & Olufsen products. Refer to the relevant User Guide for further information.

**CONTROL?** For configuring control of windows, curtains etc. [Refer to CONTROL.](#)

**CONFIG?** Enables you to program a dedicated product setup for Beo4.

**CONTROL** Used to control non-Bang & Olufsen products, e.g. windows, curtains etc.

**COUNTER (counter position)** Allows you to find a specific counter position on a video tape. Press LIST repeatedly to bring up **COUNTER** in the Beo4 display and then enter the appropriate counter position using the number buttons.

## D

**DTV (Digital TV)** Appears in the display when you press the Beo4 DTV button. Any operation you carry out on Beo4 will operate your Bang & Olufsen digital TV source.

**DTV2** For switching on any extra video equipment connected to your Bang & Olufsen video system. Press the centre button.

**DVD (digital versatile disc and Blu-ray)** Appears in the display when you press the Beo4 DVD button. Any operation you carry out on Beo4 will be directed to your DVD player.

**DVD2 (a second DVD player or video recorder)** For switching on a second video recorder connected to your Bang & Olufsen video system.

## E

**EDIT** Used for playback of a preprogrammed sequence of CD tracks on BeoSound 9000.

## F

**FORMAT (picture format)** For optimising the picture format on a Bang & Olufsen video system. Refer to the relevant User Guide for further information.

## G

**GAME** Used when playing games using the television as monitor. **GAME** minimises the delay caused by signal processing.

## I

**INDEX (Teletext index page)** Brings up the Teletext index page (p.100). Add **INDEX** to the Beo4 list of functions. Access Teletext by pressing TEXT and press LIST repeatedly to bring up **INDEX** in the Beo4 display and press the centre button to bring up the page.

## J

**JOIN** Is a Master Link function. Press LIST repeatedly to bring up **JOIN** in the Beo4 display. You are connected to the active source in the system. In standby mode radio will be used as source.

## L

**LAMP (lamp light control)** For switching on a particular lamp in your light setup – requires the installation of a Bang & Olufsen light control unit. Press LIST repeatedly to bring up **LAMP** in the Beo4 display, add the “button” if it is not already available, then enter the appropriate number for a lamp (1 – 9).

**LARGE (Teletext: Large)** Used on certain Bang & Olufsen TVs for enlarging the Teletext page you are watching. Access Teletext, then press LIST repeatedly to bring up **LARGE** in the Beo4 display and press the centre button to enlarge part of the page. Press the centre button to enlarge the second half of the page and press the centre button to return to normal Teletext page size.

**L-DTV2** For selecting LINK and then DTV2.

**L-DVD2 (link second DVD player or video recorder)** For selecting **LINK** and then **DVD2**.

**LIGHT (light control)** Appears in the display when you press the Beo4 LIGHT button. Any operation you carry out on Beo4 will be directed towards your Bang & Olufsen light control(s).

**LIGHT?** For configuring light settings. [Refer to LIGHT.](#)

**LINK** Must be used where the use of a LINK button is normally specified.

**LINK** must be added to your Beo4 to achieve the following:

1. If it is desired that a decoder in the main room can be accessed from a video link room.
2. If the same source is available in both link and main room, e.g. if access is desired in the link room to a video recorder in the main room instead of the video recorder present in the link room.
3. If a link room product, e.g. BeoLab 3500 or a second television, is placed in the same room as a main room product in Option 4.

**LINK-AV (link audio/video)** Used to obtain stereo sound from your main Bang & Olufsen video system in a link room with a secondary video source, usually TV. The function is useful when a TV decoder is connected to the main video system. Add it to the Beo4 list of functions, press LIST to reveal **LINK-AV** and then press TV to do so.

**L-N.MUS** For selecting N.MUSIC in a link room.

**L-N.RA** For selecting N.RADIO in a link room.

**L.OPT (link option)** For programming a system setup for link room products. Use **L.OPT** for programming a link option.



>> *Lexicon ...*

**LOUDNSS (loudness)** For switching the loudness function on/off in certain Bang & Olufsen systems. **LOUDNSS** is only available if [A.SETUP](#) or [V. SETUP](#) has been added. The loudness function compensates for the human ear's lack of sensitivity to high and low bass and treble levels when listening to low volume levels. Press LIST repeatedly to bring up **LOUDNSS** in the Beo4 display and then press the centre button repeatedly to set loudness to on or off. If you wish to store your adjustment, [refer to S.STORE \(Sound Store\) for further information.](#)

**L-PC (Link PC)** For selecting **LINK** and then **PC**.

**L-V.AUX (Link V.AUX)** Used in some situations to distribute the set-top box signal to the link room.

## M

**MIX (Teletext: Mix)** Used on certain Bang & Olufsen TVs to superimpose the Teletext page on the TV picture. Access Teletext, press LIST repeatedly to bring up **MIX** in the Beo4 display and then press the centre button.

**MODE?** For setting the Beo4 to the correct mode depending on the setup. [Refer to 'Beo4 modes \(MODE?\)'.](#)

**MOTS (More Of The Same)** Used to activate MOTS on an audio product.

**MOVE?** Appears as an option in the Beo4 setup mode, Enables you to rearrange the order in which the extra "buttons" in the Beo4 display appear. [Refer to 'Move extra 'buttons''.](#)

## N

**N.MUSIC (Net music)** For playing music tracks in mp3 and wma format. Any operation you carry out on Beo4 will be directed to your N.MUSIC player, e.g. BeoSound 5.

**N.RADIO (Net radio)** For access to Internet radio. Any operation you carry out on Beo4 will be directed to your N.RADIO player, e.g. BeoSound 5.

## O

**OPTION? (Option programming)**

**V.OPT (video option)**

**A.OPT (audio option)**

**L.OPT (link option)**

## P

**PAGE (Teletext page selection)** For selecting Teletext pages on certain Bang & Olufsen TVs (where pressing GO TO is normally required for access or page selection).

**PC** For switching on any extra video equipment connected to your Bang & Olufsen video system. Press the centre button.


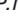
**P-DTV2** For showing DTV2 in the picture to the right. [Refer to P-AND-P.](#)

**P-DVD2 (picture-and-picture video recorder 2)** For showing DVD2 in the picture to the right.

**P-AND-P (picture-and-picture)** For operating the picture-and-picture function on certain Bang & Olufsen TVs. Press, for example, the TV button to bring up the source TV in the picture to the right.

**PICTURE** For operating the various functions related to the PICTURE button on other recent Bang & Olufsen remote controls. In older video systems, it may relate to functions such as motorised stand, picture-and-picture, as well as picture adjustment. [V.SETUP](#) must be added to be able to access **PICTURE**.

**PLAY** start playback of a DVD, recording etc.

**P.MUTE (picture mute)** Switches the picture on or off. Press LIST and  or  to select **P.MUTE** and press the centre button to change the setting. Only available on some televisions.

**P-PC (picture-and-picture PC)** For showing PC in the picture to the right.

**P-V.AUX (picture-and-picture V.AUX)** For showing the source connected to the V.AUX socket in the picture to the right.

## R

**RADIO** Appears in the display when you press the Beo4 RADIO button. Any operation you carry out on Beo4 will be directed to your Bang & Olufsen radio.

**RANDOM (random play)** For switching on the random order playback function in recent Bang & Olufsen CD players. With **RANDOM** in the display, press the centre button.

**RECORD** Starts a recording on a Bang & Olufsen audio or video recorder. Available in the LIST menu.

**RECORD2 (recording A.MEM2 or DVD2)** Should be added when you connect a second video recorder to your video system. Starts a recording on a second Bang & Olufsen audio or video recorder. Press the centre button twice to start recording.

**REMOVE?** Appears when you have accessed the Beo4 setup mode. Enables you to remove extra “buttons” from the Beo4 display. [Refer to ‘Remove an extra ‘button’](#)’.

**REPEAT (repeated play)** For switching on the repeated playback function in some Bang & Olufsen CD players, for example BeoSound 9000. With **REPEAT** in the display, press the centre button.

**RESET** For resetting picture or sound adjustments to their preset levels. Press the centre button. Available in the LIST menu.

**RESET?** For resetting the product to default. [Refer to ‘Reset your Beo4 \(RESET?\)’](#).

**RETURN (record return)** For operating the record return function in certain Bang & Olufsen tape recorders. To return to where a recording started, press the centre button.

**REVEAL (Teletext reveal)** For revealing concealed Teletext information in Bang & Olufsen TVs.

## S

**SELECT** Is used for programming a sequence of compact discs for playback on BeoSound 9000.

**SETUP** For setting up the LC 2 Light Control.

**SHIFT** For operating certain functions related to set-top box operation in a link room. Certain other functions may also require that **SHIFT** is displayed first.

**SLEEP** For setting a sleep timer on the television using Beo4. Press LIST repeatedly to bring up **SLEEP** in the Beo4 display and press the centre button repeatedly to set different sleep timers.

**SOUND (mono/stereo sound/language)** For switching between the types of sound (mono/stereo/language) currently available on a Radio-, TV-, or digital TV programme. Press the centre button repeatedly.

**SP.DEMO (speaker demo)** For making a speaker demonstration on the system in question. Press the centre button.

**SPEAKER (loudspeakers)** For selecting the number of loudspeakers you want – in a Bang & Olufsen surround sound setup. Press 1 – 5.

**S.STORE (sound store)** For storing sound adjustment settings. **S.STORE** is only available if [V.SETUP](#) or [A.SETUP](#) has been added.

**STAND** For turning certain Bang & Olufsen video systems on their motorised stands.

**STORE** For storing TV programs/picture adjustment settings ([Refer to V. SETUP](#)) and favourite Teletext pages (memory pages). For storing Bang & Olufsen light setups ([Refer to LIGHT](#)). Press the centre button, enter the appropriate number, and then press the centre button again.

**SUBCODE (Teletext subcode)** For operating the Teletext subpage function in certain Bang & Olufsen TVs.

## T

**TEXT (Teletext)** Appears in the display when you press the Beo4 TEXT button. Any operation you carry out on Beo4 will operate the Teletext function (if Teletext is available) on the TV program you are currently watching.

**TRACK** For selecting individual CD tracks on BeoSound 9000.

**TRACKNG (tracking)** For instant tracking adjustment of the video tape you are watching.

**TREBLE** For sound adjustment of treble tone in certain Bang & Olufsen systems. TREBLE is only available if [A.SETUP](#) or [V.SETUP](#) has been added. If you wish to store your adjustment, [refer to S.STORE \(Sound Store\) for further information](#).

**TUNE (tuning in a station)** For tuning in stations on certain Bang & Olufsen TVs. **TUNE** is only available if [V.SETUP](#) has been added.

**TURN** For turning the tape in certain Bang & Olufsen audio tape recorders – to play the other side. On certain Bang & Olufsen video tape recorders **TURN** is also used for input selection of Camcorder in record pause mode. Press the centre button.

>> *Lexicon ...*

**TV** Appears in the display when you press the Beo4 TV button. Any operation you carry out on the Beo4 will be directed to your Bang & Olufsen TV.

## U

**UPDATE (Teletext update)** For operating the Teletext update function in Bang & Olufsen TVs. Press the centre button. Repeat the operation to see the page when it has been updated.

## V

**V.AUX (auxiliary video source)** For switching on any extra video equipment connected to your Bang & Olufsen video system. Press the centre button.

**V.AUX2 (second auxiliary video source)** For switching on extra video equipment connected to your Bang & Olufsen video system.

**VIDEO?** For selecting a dedicated video product setup for Beo4. [Refer to 'Beo4 configuration \(VIDEO?\)'.](#)

**VIDEO5**

**VIDEO6**

**V.MEM (video recorder)** Appears in the display when you press the Beo4 VMEM button. Any operation you carry out on Beo4 will be directed to your Bang & Olufsen video recorder.

**V.OPT (video option)** For programming a system setup for video products.

**V.SETUP (video setup)** Gives access to a list of extra "buttons" that are required for the setting up of certain Bang & Olufsen video products.

**STORE** For storing an adjustment or a preset value, [refer to STORE for further information.](#)

**BASS** Sound adjustment of bass tone, [refer to BASS for further information.](#)

**TREBLE** Sound adjustment of treble tone, [refer to TREBLE for further information.](#)

**LOUDNSS (loudness)** Sound adjustment – switching the loudness function on or off, [refer to LOUDNSS for further information.](#)

## Z

**ZONE** Set your Beo4 to a zone, i.e. decide which product should activate video and audio sources. [Refer to 'Beo4 zones'.](#)

**ALL** One Beo4 in each room.

**VIDEO** More than one Beo4 in a room.

**AUDIO** More than one Beo4 in a room.

**LINK** For products set to Option 4.